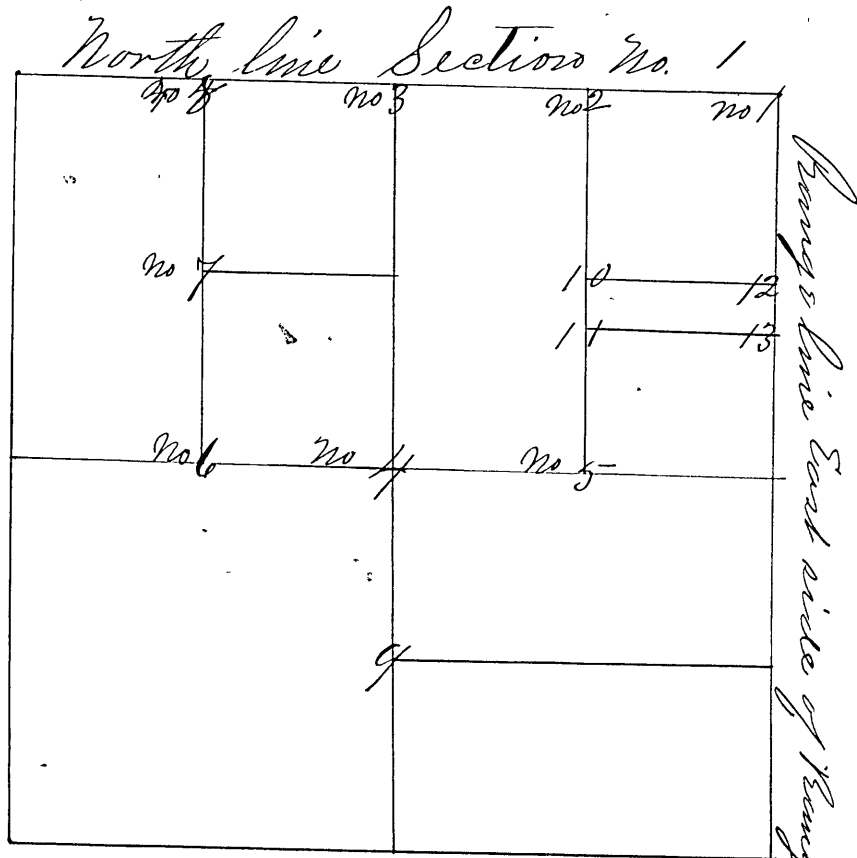


Surveyed by John J. Payton, Deputy County Surveyor,
 March the 6th 1851 to nos 1 to 5. Second Survey March the
 16th 1853 to 6, 7, 8.



- Corner No. 1 a. corners of Towns 11 & 12 Range 5 & 6
 Witness trees { Sugar 8 in. dia. S 72 deg W 125 links
 No other timber near on Range line
- Corner No. 2 a N.W. cor. E 1/2 of N.E. qtr
 Sugar 18 South 20 20/2 links
 Hickory 4 N 72 E. 10 links
- Corner No. 3 a half mile on north S line
 Ash 20, S 21 E 18 links
 White Oak 24 S 41 W 35 links
- Corner No. 4 a Center of Section No. 1
 Ash 10 S 26 W 8 links
 Ash 7 N. 67 E. 5 1/2 links
- Corner No. 5 a S.W. cor. of E 1/2 of N.E. qtr
 Beech 13 S 1 E 17 links
 Beech 30 N 17 E 40 links
- Corner No. 6 1/4 mile E of 1/2 mile post on W side sand stone marked 1/8 S.
 W. Oak 22 S. 44 W 46 l.
 do. 24 N 8. 30 E. 36 "
- Corner No. 7 1/4 mile N. of no. 6 sand stone marked 1/16 S.
 Beech 22 S 8 W. 12 "
 B. Gum 20 S 44 E. 21 "
- Corner No. 8 1/4 mile N of no. 7 sand stone marked 1/8 S.
 Beech 4 S 6 W 49 1/2 l.
 W Oak 36 S 68 E 28 "
- Corners 9, 10, 11, 12 & 13 set by John A. Davis Jan 9th 1860