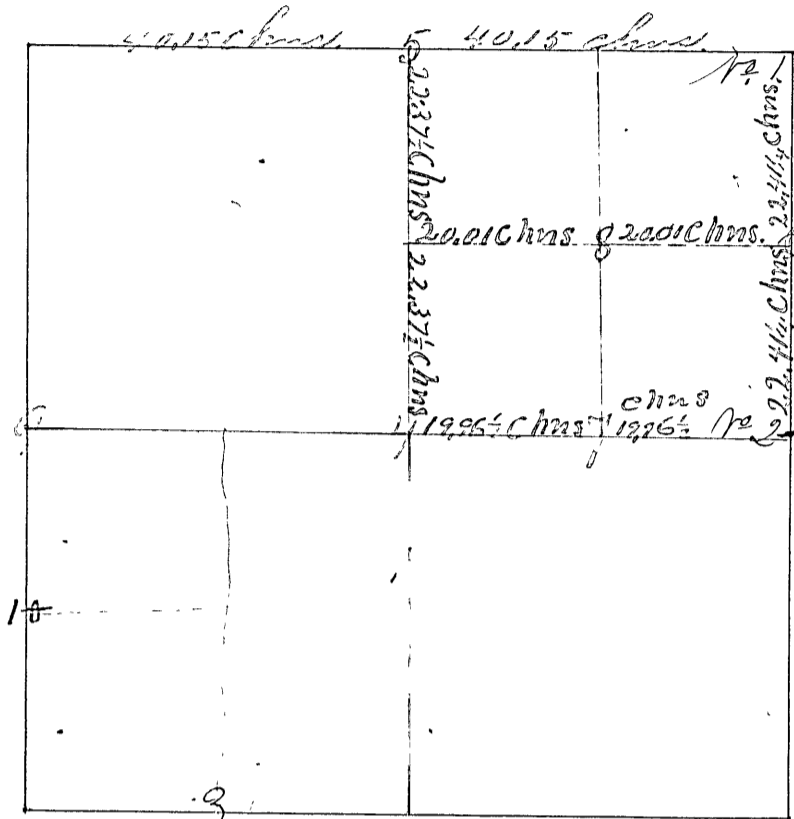


Surveyed by Wm. Herros Deputy Co surveyor
 March 10th 1859 Mutual consent Parties present A. Hicks &
 N. Gibbons chain carriers & markers & sworn according to Law
 & corners set March 9th & 23rd for corners No. 1 & 2 variations
 same as lines



Corner No. 1 a Sand Stone 24 in long & 15 wide marked and lettered T11R6
 and set at the place corresponding with old or original witness trees
 which is about 26 links South of Township line

a Sand Stone lettered T.L., 20 in long set on Township line
 North with section line 26 links North of first stone
 the true T.L. corner of said section as the first
 corner does not close on the T.L. and witness taken
 White Oak 18 in. S 4 3/4 E 4 1/2 links from orig. corner
 & S 2 1/2 E 6 1/2 from Township line corner
 T.L. corner 19 poles & 5 links West on T.L.
 from corner corner of Sec. 32 & 33. T. 12 R. 6.
 on said Township line

Corner No. 2 Flint Stone 20 in 1/4 S, E 1/2 W.

Hickory 6 S 89 E 5 1/2 links

Ash 10 S 88 W 9 1/2 links,

Cor No 3 set by agreement of parties equidistant from
 S. W. Sec corner and q. sec corner on line

Sand Stone marked + Jack Oak 12 S 22 E 22

Oct 1869 by W. B. Lister S. E. C.

Witness taken to north corner No. 1. A. W. Oak 36 N 4 1/2 E 6 5/8 links.