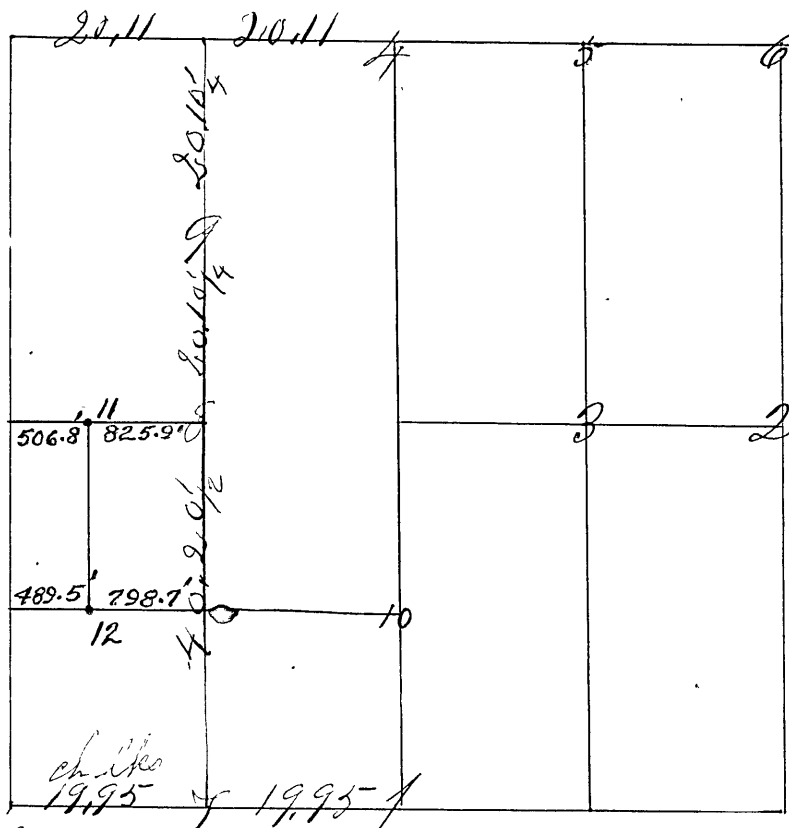


Surveyed by S. F. Ferris Survey G. C. Dec. 21st, and 22nd 1868 af. due notice given "Clay County Democrat" three times vol. 6 Nos. 47, 48 and 49 chain carriers George Houser, Thomas Smith and sworn as law directs corners set from 1 to 6



- No. 1 Sand Stone glass under. 1/4 S. original bearings found
Water Beech 6 N. 7 1/4 E. 70 lbs.
- " No. 2 S. Stone 1 1/4 S East side original bearings found
Dog Wood 6 S 53 3/4 W 81 lbs.
- " No. 3 A Sand Stone +
W. Oak 30 N 83 N 52 lbs.
- " No. 4 S Stone
W Beech 24 S 50 1/2 W 37 S.
- " No. 4 S. Stone 1/4 S. N. line
W Oak 36 N 32 E 36 1/2 "
- "
W Sassafras 3 S 26 1/2 E 53.
- " No. 5 A Stone 18 in, long X
Bickory 20 N 84 W 77 lbs.
- " S. Stone S 63 1/2 W 50 "
- " No. 6 A Stake North East corner original bearings found
A White Walnut 10 dia. S 57 1/2 W 28 1/2 S,
Poplar 8 S 43 W 20 "