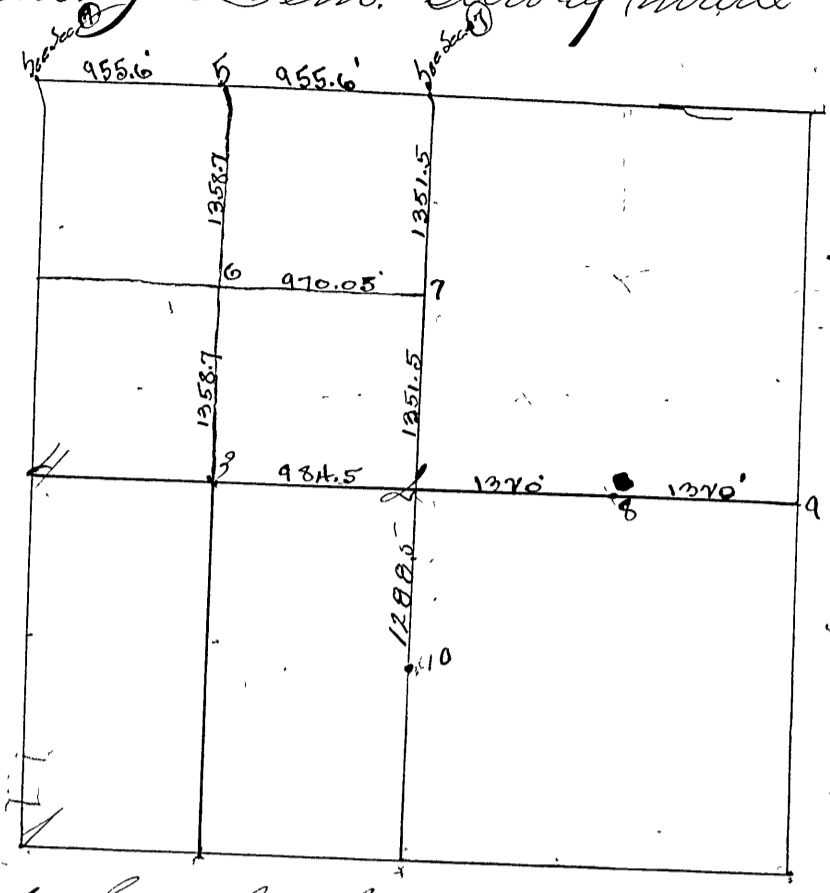


SECTION Eighteen (18) TOWNSHIP Eleven (11)

Corner No 1 South West corner Sec, set by J. O. Davis Notice pub, in "Clay County Dem." Survey made Feb. 11th 1863.




Cor. No 1 Sand Stone S18. S19  
 mit { Corner of Sections 13 & 24 North  
 213 links & original Beech & Elm.

See Below

Cor No 3 Stake true, no bearing.

See Below

Cor No 3 Stake for which Burr oak 6 in to 40 in 15 lbs  
 Cor No 4 Stake  Wh. Oak 18 in to 8 1/2

Cor No 4 Stake set by consent and agreement of parties interested

Sour oak 10 in to 6, 7 1/2 33 lbs  
 Burr oak 3 in to 89 1/2 63 "

Further surveyed June 3-5-6-1915 by Wm. P. Koehler, Deputy Surveyor Clay County.  
 Parties duly notified 10 days previous. Walter Doaker & Ira McGill, chainmen, duly sworn.

Cor No 2. Reset from Burr Oak Witness - A Granite Boulder, 18" x 15" x 12".

Witness - White Oak 12" S 52° 30' E - 33.5 feet. Water Oak 15" S 57° 30' W - 56.5 feet.

Cor. No. A limestone 15" x 10" x 4".

Witness - A rickthead 4" x 6" x 8" - N 87° 15' E - 16 feet.

" A sandstone 12" x 8" x 3" - S 2° 15' E - 16 feet.

Cor. No 5. A Granite Boulder 10" x 10" x 4".

Witness - Honey locust 8" S 40° E - 7.6 feet Apple 10" S 38° W - 41.9 feet.

Cor. No 6. A Sandstone 18" x 10" x 5".

Witness - Sweet Gum 18" S 47 1/4° W - 15.0 feet. Water Oak 30" S 54° E - 33.6 feet.

Cor. No 7. A Concrete Corner - 32" x 10" x 6"

Witness - Water Oak 30" N 46° 15' E - 14.3 feet. Buggy axle 5'-0" long - S 89° W 12.1 feet.