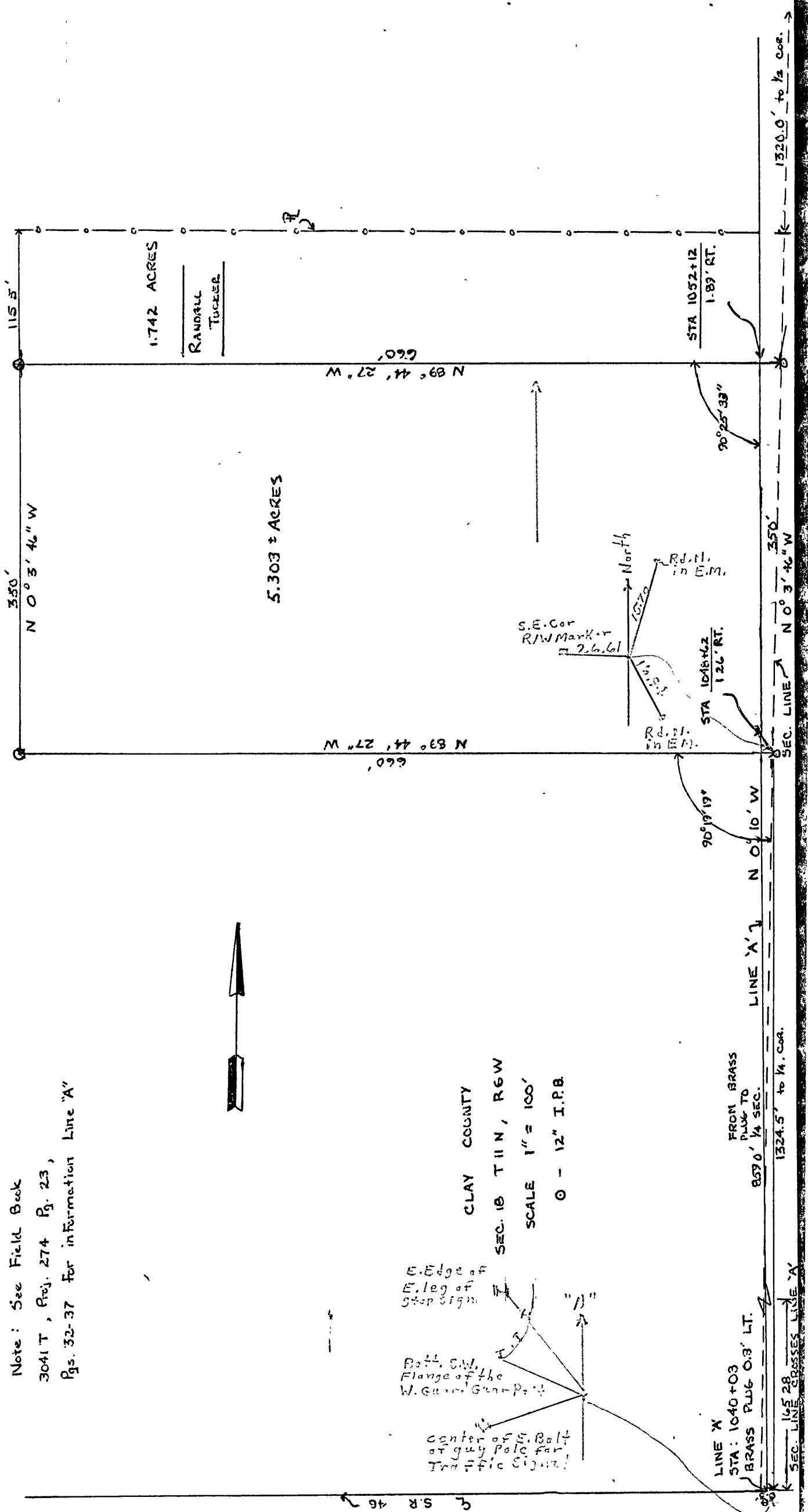


NORTH RANGE *Six (6)*, WEST

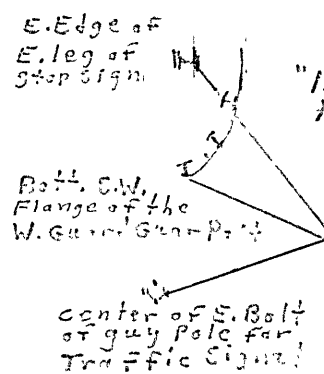
Cor. #8 Two Sandstones - Bottom Stone lying flat. Top Stone 8" x 3" x 6".
 Witness - An Iron Pin 1" x 24" N 87° 30' E. 20' feet.
 Southeast Corner of Residence N 78° W. 60.2 feet.

Cor. #9

INDIANA DEPARTMENT OF HIGHWAYS
 CRAWFORDSVILLE DISTRICT
 PROPOSED ASHBORO MAINTENANCE SITE



Note: See Field Book
 3041 T, Reg. 274 Pg. 23,
 Pgs. 32-37 for information Line "A"



LINE 'X'
 STA: 1040+03
 BRASS PUG 0.3' LT.
 FROM BRASS PUG TO PUG TO 1/4 SEC. 8570' 1/4 SEC.
 1324.5' to 1/4. Cor.
 SEC. LINE CROSSES LINE 'A'

County