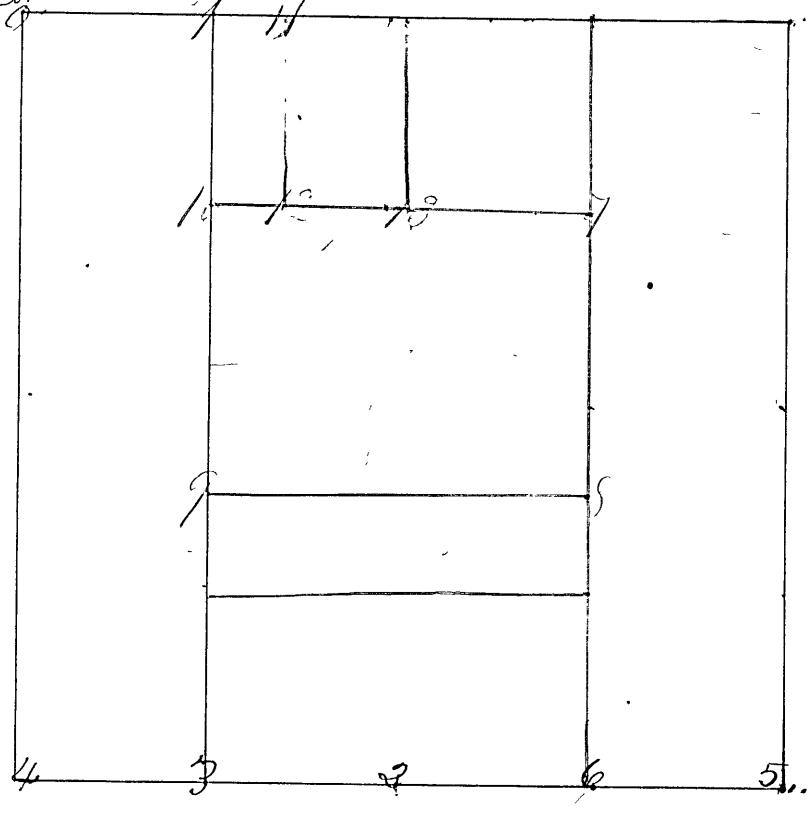


SECTION Nineteen (19) TOWNSHIP Eleven (11)

Surveyed by J. M. Davis, Feb. 11th & 12th 1862 Notice published in Wabash County Democrat & comes set from 1 to 4 June 24th 1863 at corners 5 & 6 Notice published in Wabash Co. Dem. May 30th & for 3 weeks

See Sec. 18 for this corner



- Cor No 1 Sand Stone
- " " Wit { Sand Stone South 25 Links
- " " " do do North 25 "
- " " 3 Sand Stone 1/4 S.
- " " W. Oak 20 S 73° W. 44 1/2 Links. } original
- " " do do 30 S 21° W 38 Meas. } W. Oak found
- " " 3 Sand Stone
- " " Hickory 6 N 68° E 12 Sts.
- " " Jack Oak 8 N 20° E 62 Sts.
- " " 4 "Nigger head" cor. sec. 19 & 30
- " " Beech 20 S 33° E 27 Sts. and
- " " Original W. Oak & Beech sec. cor of 24 & 25 } E. 1/2 of 24 & 25
- " " 5 Sand Stone sec. 19, 20, 29 & 30
- " " Red Oak 9 S 69° E 19 Sts.
- " " do do 8 N 55° E 54 "
- " " 6 "Nigger head"
- " " W. Oak 24 N 17° E 45 Sts.

J. M. Davis S. C. C.

Just a survey of H. ... 13 and ...

W. Oak 20 S 70° E 37 Sts.
Beech 8 S 33° E 27 "