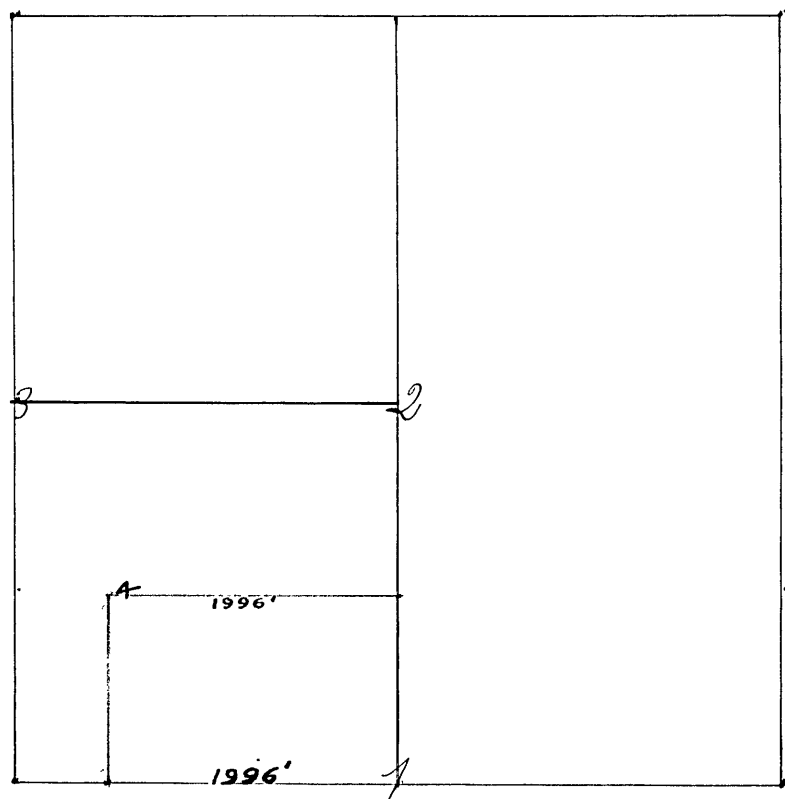


Surveyed by J. N. Davis. June 24th 1862 Notice by pub. in Clay Co. Dem. for three weeks see No. of May 30th John McCracken & Geo. Lash sworn as ch. sur. & corners set from 1 to 3



See Src (14)

Cor. No. 1 Lime Stone

" "

White Oak (original) 24. N 36 W 32 lks.

" " 2. Sand Stone

" "

W. Oak 30 S 33 W 31 lks.

" " 3

Stone

W. Oak 40 S 47 W 50 lks.

Corner No. 1. Lost - reset by Homer Hicks, Dept. S. C. C. January the 26th, 1882. set at the request of Thomas Johns. set from Orignal Bearing tree a White Oak 24. N 36 W 32 lks.

Cor. 1 a sand Stone 15 ins. long marked 1/4 S. from which a Boulder 8 1/2 ins. long S 47 E 30 1/2 lks.

Further Surveyed March 29, 1957 by O. D. Jenkins C. C. S.

Cor. # 4 A iron post set in concrete.