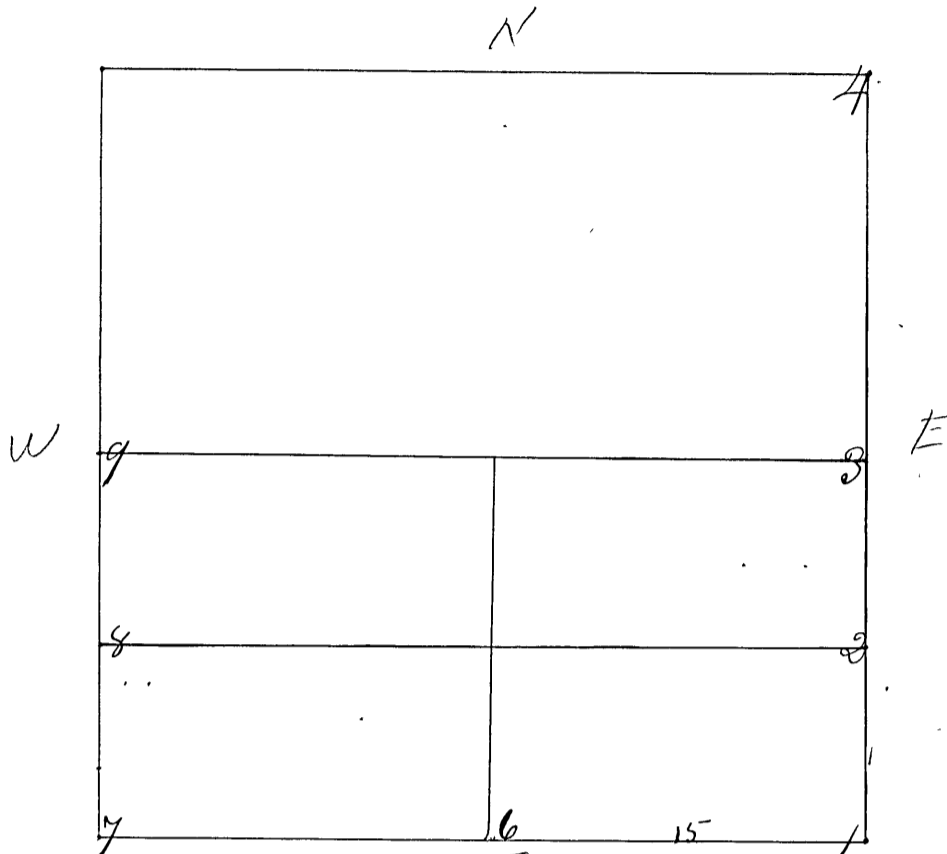


SECTION *Twentyone* (21), TOWNSHIP *Chow* (11)

Surveyed by Gen. V Goshorn U.S. Commence Nov. 6 1865
 Notice given by 3 Publications in Clay Co. "Aurora Borealis"
 Andrew Pable & Baum sworn as chain carriers & corners set
 from 1 to 9.



- Cor. No 1 S.E. cor of Sec 21 set sand stone marked 21. 8 22
 (Original bearing, W. Oak)
- Cor. No 2 Middle of E side S.E. 1/4 Sand Stone marked 16
 No bearings
- Cor. No 3 E side of Sec. Sand Stone m 1/4
 W. Oak 22 S 40 1/2 W 67 1/2 Sks
 W. Oak 30 S 78 1/2 E 70 1/2 Sks
- Cor. No 4 N.E. cor of Section Sand Stone marked 21. 22. 15 & 16. 3 1/2 the long
 Old stumps supposed to be original bearings,
- " " 5 South cor of S.E. 1/4 Sand Stone m. 1/16
 No bearing
- " " 6 South 1/2 mile Original cor. of Sec. 21. set sand stone marked 16
- " " 7 N.W. cor. of Sec. 21 set by dividing the distance equally
 between org. cor. on each 1/2 M. distanceigger head marked 21
 W. Oak 20 South - 173 Sks.
- " " 8 Center of West side S.W. 1/4 Sand Stone m 1/16
 W. Oak 15 N 44 E 32 1/2
 do. 15 S 34 E 54.
- Cor. No 9 Sand Stone marked 1/4
 ("Original Bearings")