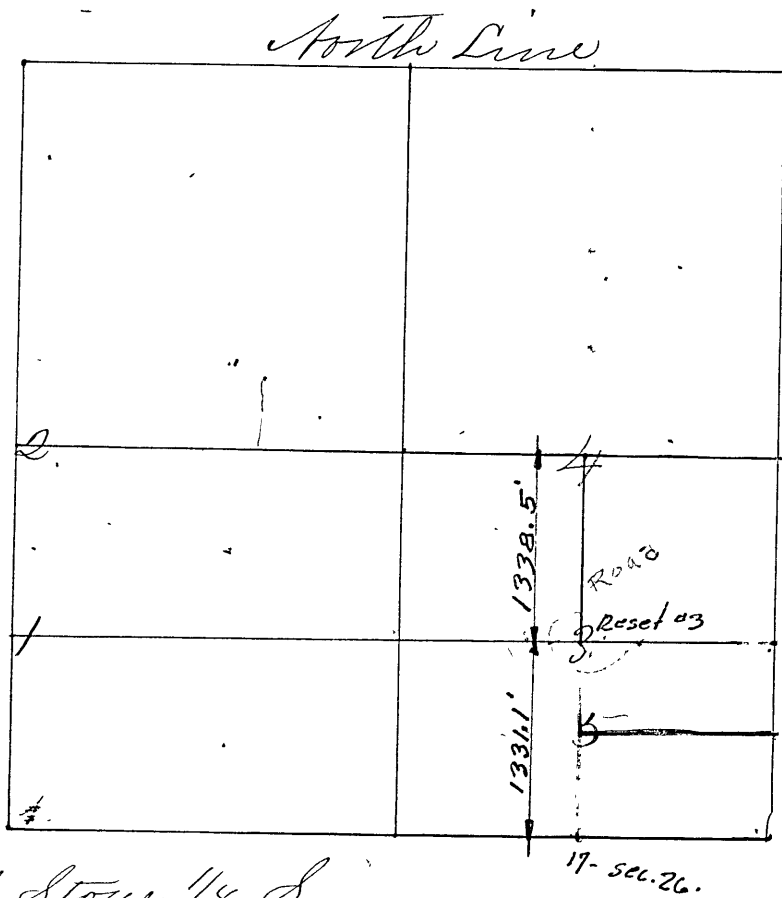


Surveyed Dec. 27th & 28th 1861 by J. H. Davis S. C. C.,
H. H. B. Miles & George Hauser sworn as ch.-carriers & corners
set from 1 to 4.



Cor No. 1 Sand Stone 1/8 S

" "

Jack Oak 5 N 59 E 116 Lks. dist &
W. Poplar 36 S 11 W 37 " "

" "

2 Sand Stone 1/4 S 1/2 mi. cor. on N. side

" "

Jack Oak 14 S 75 E 68 Links &
"Orig." W. Oak. N 10 W 40 Links,

" "

3 Sand Stone 1/8 S

" "

(see Moore vs. Moore survey)

Jack Oak 18 East 217 Links.

" "

4 S. Stone 1/8 S

Jack Oak 8 N 85 W 23 1/2 Links &
"Plum 5 S 12 E 40 Links

Further Surveyed by D. S. Maura S. C. C. April 28th 1877
Jno. Culin and David Wilson chain carriers, and corners set
Cor. No. 5 Sand Stone (marked) 1/8 S. 23, No bearings

" " " " " Sand Stone 12 X 13 N 56 1/2 E 60 Links.