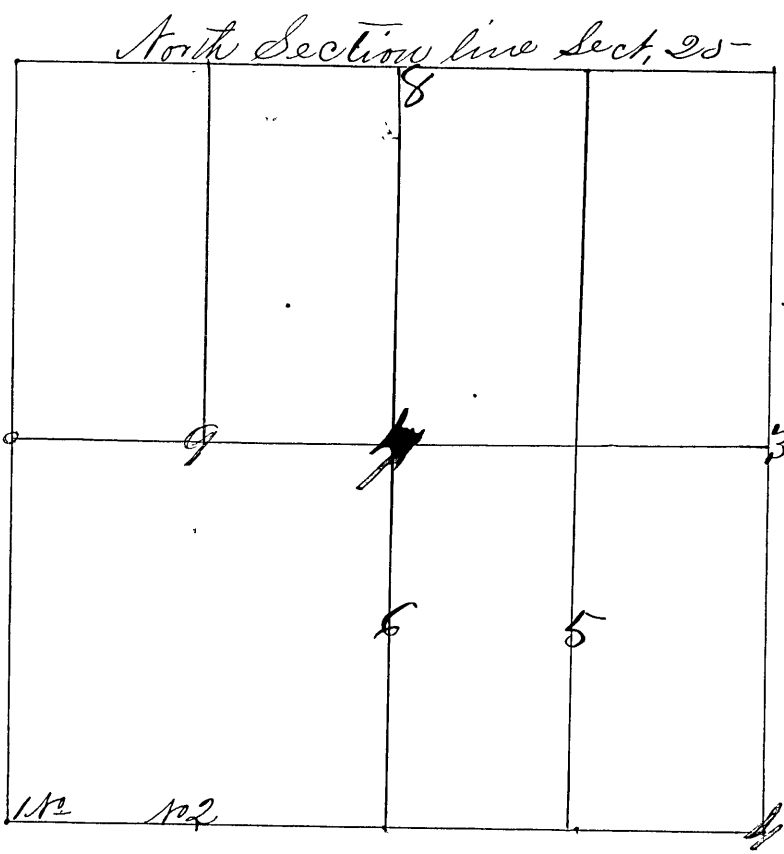


SECTION Twenty five (25) TOWNSHIP Eleven (11)

Surveyed by John J. Peyton Deputy Co. Surveyor March 8th 1857
corners No 1 & 2



See page 622.

Corner No 1 a.

corner of sections 25, 26, 35 & 36

Witness Trees { S. Gum 14 @ 3 1/2 ft 100 ft Links
Elm 4 N 40 E, 74 Links

Corner No 2 a.

S. E. C. of West 1/2 of S. 1/4 q^r

White Oak 22 S 30 E 65 1/2 Links
Elm 15 N 27 W 128 Links

Corner No 3 set, M. B. Crist Surveyor of Clay County
March 1st 18th A.D. 1869, by consent of parties

Middle of Olive a sand stone 1/4 S 25 links ^{see 30, 11, 5-} _{1/4 Cor. on N line}

W Oak 20 N 77 1/2 W 41 links
Beech 15 - N 77 E 34 links

M. B. Crist S. C.

Further Surveyed by M. B. Crist Surveyor of Clay Co. Ind
April the 18th 1871 by Request of John S. Trump

Cor No 4 S E cor of section set sand stone 14 in long (Original B Board
Red sand stone 14 " " N 45 W 29

No 5 center of S. E. corner sand stone 14 in long

Wit sand stone N 45 - W 40

No 6 sand stone center South 1/2 NW 1/4, NW 1/4

No 7 center of sec sand stone NW 1/4

Wit W Oak 40 S 30 E 30

No 8 Quarter sec cor on N line sand stone 14 in long

Buckeye 8 East 64 links

M. B. Crist S. C.

Illegal on account of insufficient notice.