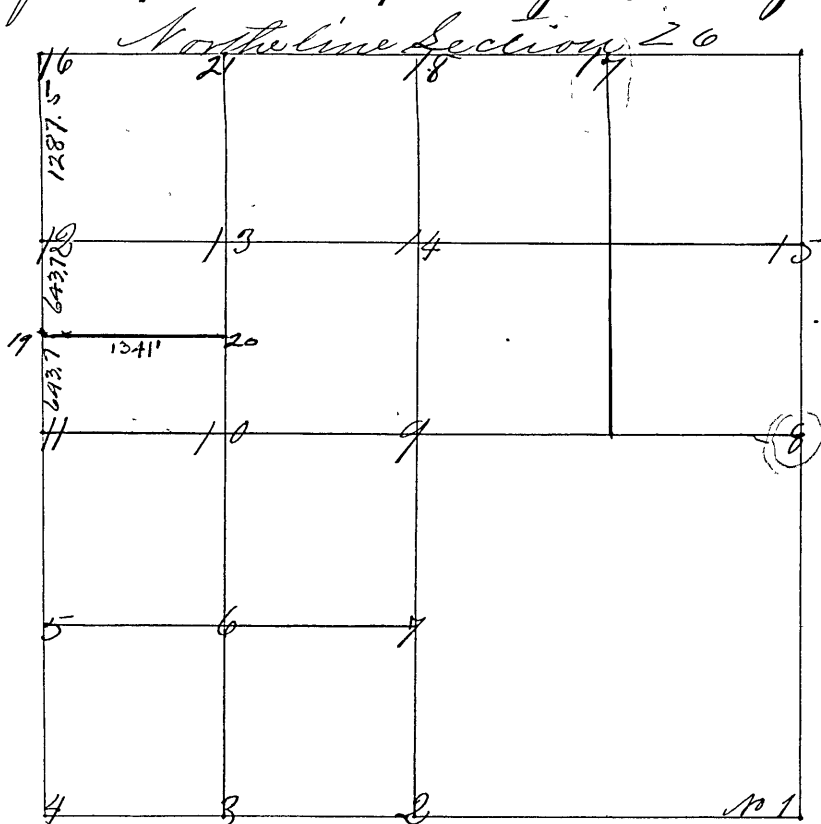


Surveyed by J. J. Peyton County Surveyor of Clay County



Found 2/19/40. Reported. Wm. W. Allen, Surveyor. Aug 6

Cor. No. 1 S. E. corner of Section 26

Box Elder 12 S 65 N 24

Cottonwood 24 East 24

Maple 12 S 44 E 43 lks.

Surveyed by S. F. Ferril Oct. the 3, 4, 5 and 6<sup>th</sup> 1864 agreeable to notice given in the Clay County Democrat 3 times Vol. 7 Nos. 38, 39 and 40. Chain carriers sworn as saw direct and corners set from 2 to 16.

No. 2 Stake 1/4 S South line

Beech 20 N 5 1/4 W 44

Wild cherry 10 N 7 W 10 7/2 lks.

No. 3 Stake

White Oak 40 S 52 W 57 1/2

No. 4 Cor. 26, 27, 34, 35 T 11 Stone

Jack Oak 20 S 10 1/2 W 67 1/2

Swamp Oak 30 S 16 3/4 E 27

No. 5 Stone x

N. Oak 30 S 33 1/2 E 119 S

No. 6 Stone x

N. Oak 36 S 71 W 32 "

No. 7 Stone x

a do 42 N 59 W 91 "

No. 8 Stone 1/4 S. East side

a Beech 24 N 36 E 71 2/3 "

No. 9 Stone 1/4 S. East side

a Sugar 12 S 53 E 70 1/2 "

No. 10 Stone 1/4 S. East side

a do 18 N 36 1/2 E 24 "

No. 11 Stone 1/4 S. East side

a Ash 8 N 3 W 43 "

a Sycamore 28 S 55 W 30 1/2 "