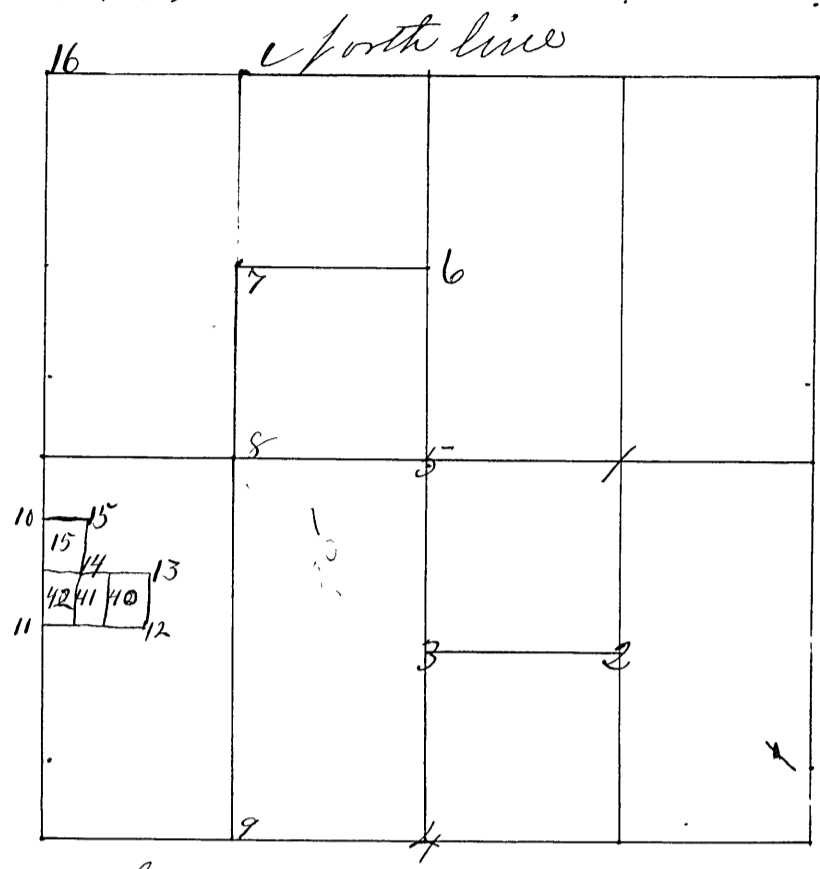


Surveyed by J. H. Davis S. B. C. Nov. 27th 1860 and corners
No. 1. 2. 3 & 4 set. Surveyed by S. F. Ferris S. B. C. Dec. the 23/1863
and cor No. 5 set.



- Cor. No. 1 Sand Stone
- " " N. Oak 20 S 43 E 5 links &
- " " do. 18 N 11 W 15 "
- " " 2 Sand Stone
- " " W Oak 24 N 2 W 6 3/4 Links
- " " W. Oak 20 S 37 E 5 3/4 "
- " " 3 Sand Stone
- " " W. Oak 10 S 68 1/2 W 38 1/2 links
- " " Ash 12 N 2 W 47 "
- " " 4 Sand Stone marked 1/4 S. 1/2 mi cor.
- " " Red Oak 30 N 10 E 23 3/4 Lks
- " " W. Oak 18 S 58 W 36 Links
- " " (Original bearing trees found)
- " " No. 5 low. Sec. 1 Stone S 1/4
- " " W. Oak 36 N 25 E 22 L.

Further surveyed by A. H. Spears, deputy surveyor
of Clay county, July 10 to 20 inclusive after serving all
interested parties with 10 days notice

Bert Bard Chairman
Ote Murphy Flagman
Earnest Renrow Chain man
Chain + Flagman sworn

Cor #6 Lime Stone irregular shape
Wit W Oak 8" S 45' 30" W 83'