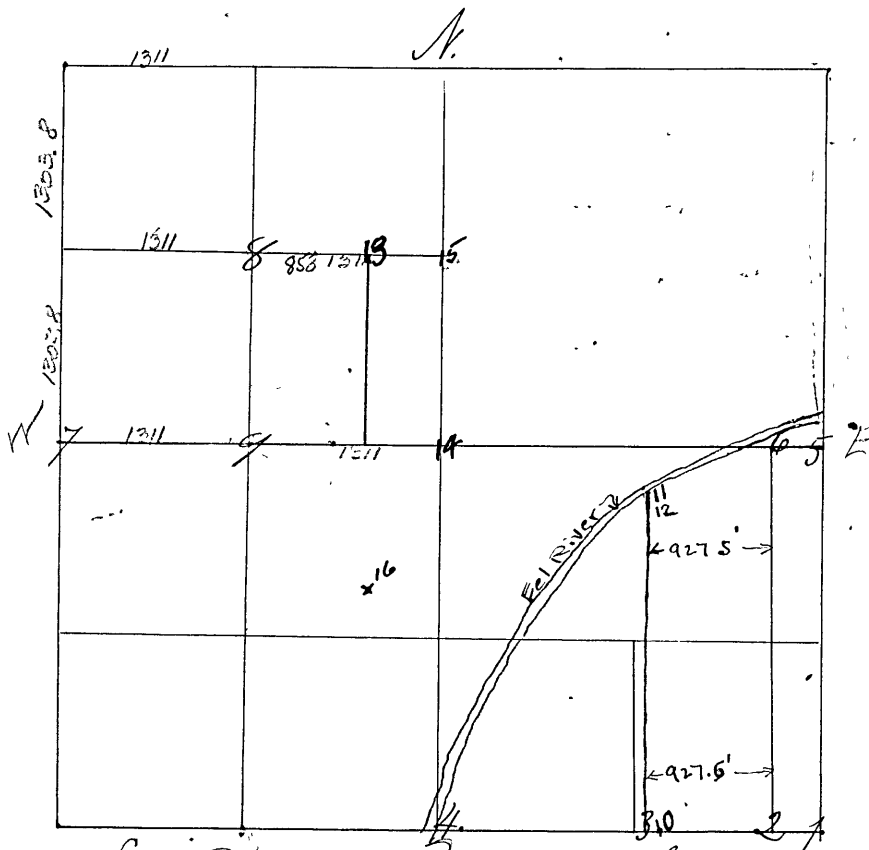


SECTION

Thirty three 33, TOWNSHIP Eleven 11

Surveyed by John Sharp Surveyor of Clay County. Feb. 26 & 27, 1857
Run at 5 1/2°



- Corner No. 1 { B. Oak 60 sw S 10 W 7 Links
- " " { B. Oak 30 sw E 12 N 17 Links
- " No. 2 { Beech 18 sw S 9 E 8 Links
- " " { Beech 16 sw W 50 N 10 Links
- " No. 3 { B. Walnut 4 sw E 10 1/2 N 54 links
- " No. 4 { B. Walnut Stake "no timber near."
- " No. 5 { B. Walnut Stake no timber near
- " No. 6 { Elm 30 sw. S 35 E 26 links
- " No. 7 middle of Section on West side Sand Stone, marked #
- " " { Hickory 15 sw. S 35 W 19 links
- " " { Elm 30 sw. N 38 E 12 links
- " No. 8 middle of N. W. qr. Sand Stone marked 1/8
- " " { Hickory 18 sw S 10 N 5 links
- " No. 9 Middle of N. E. of Sec. Sand Stone
- " " { Sycamore 36 sw. N 60 E 71 links

Corners # 10-11 set by George B. Sheehan Surveyor Clay Co. Mar. 16-1915.

Cor. #10. A Sandstone 12" x 15" x 4". Set 47.5 feet east of Cor #3.

" #11. A Sandstone 16" x 10" x 3". Set 927.5 feet west of line 2-6

Witness a Sandstone 15" x 8" x 4" on Sward Bank, on line South - 111 feet.

" Big Elm Southwest on River Bank - 34 feet.

" #17. A Sandstone 15" x 8" x 4". Set on levee 111 feet south of #11.

Witness a Sandstone north on River Bank 111 feet

" Big Elm 60" - S 65° N - 97.50 feet.