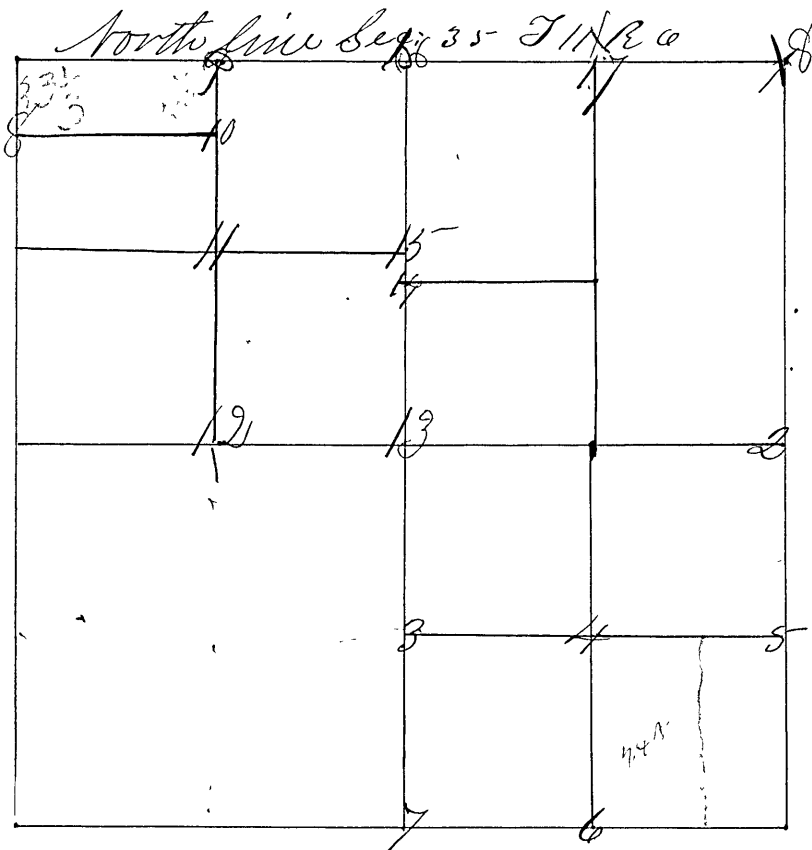


Surveyed by George T. Goshorn Deputy, Sur., and P. J. Luther Surveyor, December 9th & 11th 1867 after three weeks' notice in the "Aurora Borealis." Lines were run on the above dates and survey was adjourned on account of frozen weather and high water until April 7th 1868. P. J. Luther S. C. C. convened the lands and set corners from 1 to 7. A. Karmann and W. J. Luther chainmen were used as the Law directs. N & S lines run at 4° 45' E & W at 3° 50' and Bearings taken at 3° 50'.



(Remarks)
a copy of notice in old books.

- Cor. 1 N. E. corner set by running straight lines East & West and North & South and
- " " set at center by the compass a Sand Stone 13. m. S 25. 26. 35 & 36 T11R10,
- " " (from which) a Maple 8 S 10 E 37
- " " a. 20 12 S 83 E 39
- Cor 2 E 1/2 a Sand Stone 18 m. 14 S 35 E 36 (dug out old roots of vines)
- " " a Sweet Gum 10 S 76 1/2 W 94 1/2 E 35
- " " a White Oak 48 N 42 1/2 E 104 "
- Cor 3 1/4 S of center a Sand Stone 16 in m 18
- " " a Sand Stone S 67 1/2 E 39 "
- Cor. 4 End of S. E. gr. a Sand Stone m 16
- " " an Elm 36 S 81 1/2 E 28 1/2 "
- " " a do. 18 N 22 1/2 W 17 "
- Cor 5 1/4 m N. of S. E. cor. a Sand Stone 16 in m 18
- " " an Elm 36 N 37 W 59 lks,
- " " a Birch 15 N 20 1/2 E 55 "
- Cor 6 1/4 m W. of S. E. cor a Sand Stone 18 in in 18
- " " a Burr Oak 22 N 55 E 42 1/2
- " " an Elm 12 N 35 1/2 W 38
- Cor 7 S 1/2 a Sand Stone 12 m 14 (dug out old stumps)
- (No trees near or bearings)