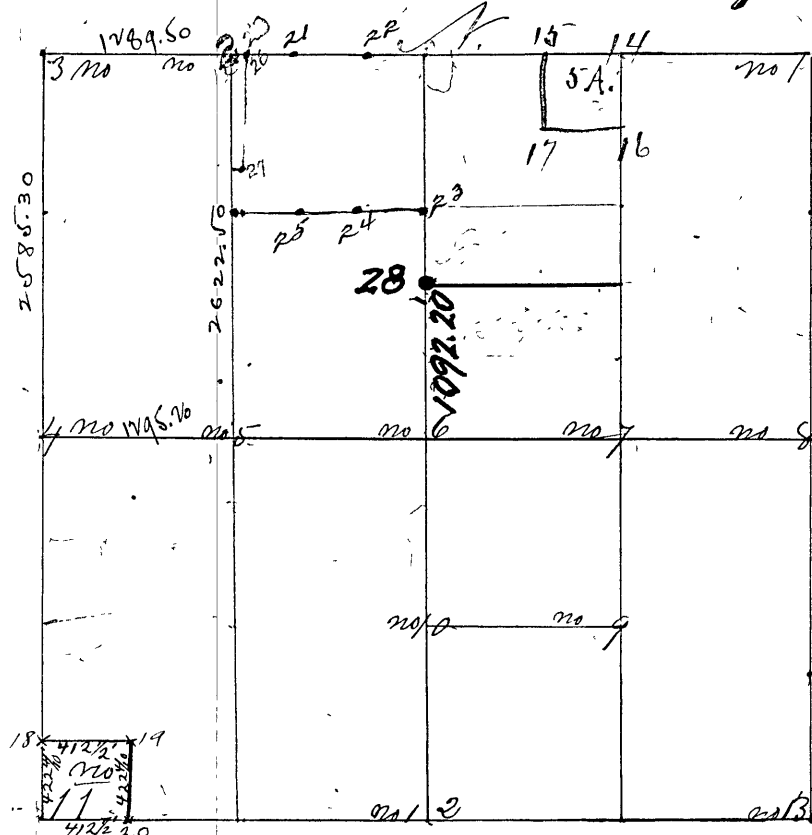


Surveyed by Wm. Huron Deputy County Surveyor January 5. 60th 1857. Written notice and consent of J. H. Ball & Laughlin chain carriers, J. H. Ball marker, sworn according to Law corners set from 1 to 13, Variation about 5' deg. West.



Corner #28 -
Further surveyed May 16/46 and May 2/46 by H.C. Dardin, Assist. and Geo. A. Sheehan, Deputy County Surveyor at request of D. Wright & W. Falladay and Corner #28 set: Corner #28, 3/4" Iron Pipe set 17.30' E. of E. of Dead and 1092.20' north of Corner #6. This corner is between Falladay on the north and Wright on the south. Witness - Telephone pole 22.50' north of Corner #28.

- Cor. No 1 North East section corner w stone lettered (with Irons)
- " " " " " " " "
- " " " " " " " "
- Cor. No 2 a Stone N.E. line W. 1/4 W. corner.
Reset in Aug-26-1914 by Geo. A. Sheehan
Surveyor Clay Co. at request of
Geo. Ferrel. Parties duly notified
- " " " " " " " "
- Cor. No 3 a Stone lettered North West Sec. corner
- " " " " " " " "
- Cor. No 4 a Stone let 1/4 S. West 1/2 W corner
- " " " " " " " "
- " " " " " " " "
- Cor. No 5 a Stone center E & W line W 1/4 W. C.
- " " " " " " " "
- " " " " " " " "
- Cor. No 6 a Stone center of Section five
- " " " " " " " "
- " " " " " " " "
- Cor. No 7 a Stone center E & W cen. line E 1/4 W
- " " " " " " " "
- " " " " " " " "
- Cor. No 8 a Stone East line 1/4 W. C. let. 1/4 S.
- " " " " " " " "
- " " " " " " " "

F.P.
F.S.
1992