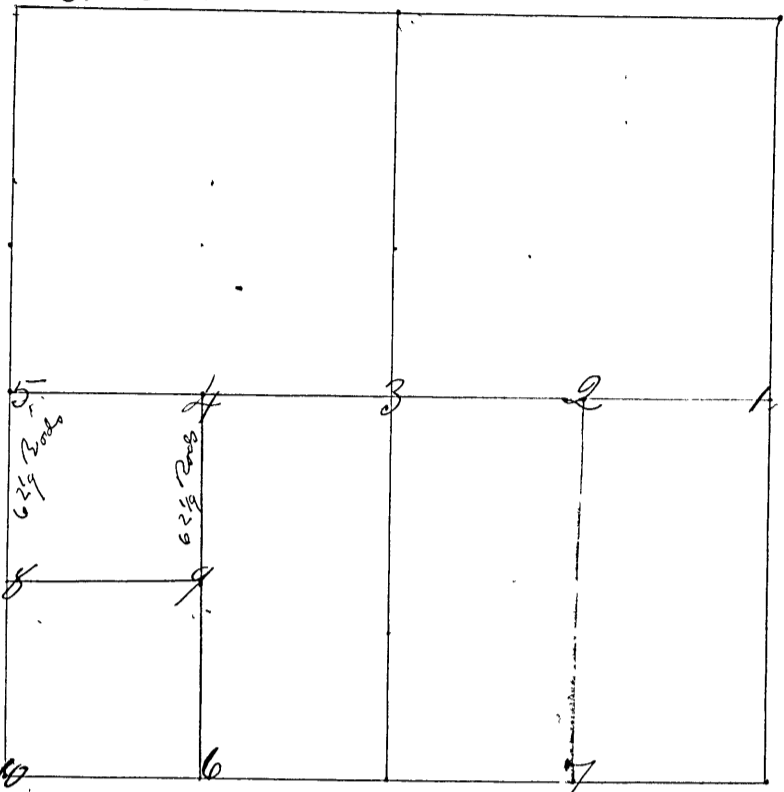


Survey commenced February 14th day 1851 by New Horron County Surveyor, C. C. La. Parties present, The bearing of witness trees taken at 5 deg. west variation for corner found No 1 to No 7, Section No 7 north line



- Corner No 1 A Stone East line 1/2 mile corner (Witness trees)
 " " " White Oak 6 in. dia. N 49 1/2 E 45 links
 " " " S Oak 8 S 57 1/2 W 57 1/2 links
- Corner No 2 A Stone East 1/4 m. E & W center line
 " " " Black Oak 5 N 82 1/2 W 42 links
 " " " Ash 5 N 87 E 33 1/2 links
- Corner No 3 A Stone center of Section No 7
 " " " Beech 10 N 1 W 5 1/2 links
 " " " Sugar 12 S 42 E 37 1/2 links
- Corner No 4 A Stone 1/4 m corner center E & W. l.
 " " " Black Walnut 24 N 67 1/4 E 11 links
 " " " Buck 10 S 14 1/2 E 23 links
- Corner No 5 A Stone West S. line 1/2 mile corner
 " " " Red Oak 19 N 65 E 53 1/2 links
 " " " Gum 18 S 16 W 67 1/2 links
- Corner No 6 A Stone South line 1/4 m corner
 " " " Beech 20 N 21 E 45 links
 " " " Sugar 6 S 46 1/4 E 73 links
- Corner No 7 A Stone South line 1/4 mile corner
 " " " Elm 12 S 49 W 34 links
 " " " White Oak 10 N 44 1/2 W 46 links
- " " " Corners established nos 8 & 9 by S. F. Ferris Surveyor of Clay Co Ind. done Friday May the 22nd 1863
- Corner No 8 A "riggerhead" X from which
 A Sand Stone E 34 1/4 links