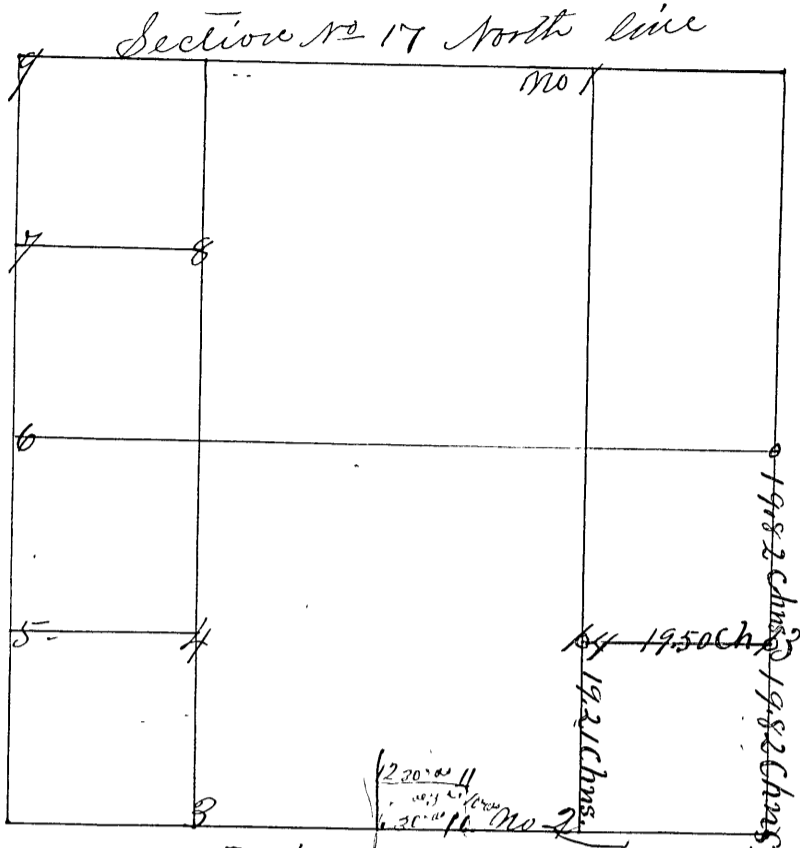


SECTION *Seventeen (17)*, TOWNSHIP *Twelve (12)*

Surveyed by John J. Peyton Deputy County Surveyor March 30th 1851 corners nos 1 & 2



- Corner No. 1 a Flint ^{no 175} ⁷¹² ¹⁶ N. E. of West 1/2 N E q.
- " " Sugar 14 N 56 E 50 links
- " " White Oak 20 N 12 W 100 links
- Corner No. 2 a — S. E. of West 1/2 of S E quarter
- " " Sugar 20 N 74 W 33 links
- " " Beech 20 S 88 E 28 links

The above named sections further surveyed and corners established viz; 3, 4, 5, 6, 7, 8 & 9 by P. J. Luther Surveyor of Clay county on the 23^d & 24 days of September 1867 by mutual consent of all interested parties. Alexander Wolford & Madison Miller chainmen John Whittington sr. flagman all sworn as the law directs Bearings taken at 4. 30

- Cor. 3 a Sand Stone 15 in mo 1/4
- " " a Sugar 14 N 28 1/2 W 33 lks.
- " " a 50. 12 N 1 E 47 "
- Cor 4 a Sand Stone 10 in mo 1/4
- " " a Beech 14 S 67 W 16 1/2 lks.
- " " a Do 20 S 71 E 35 "
- Cor 5 a Sand Stone 4 1/4 mo
- " " a Burr Oak 14 N 71 W 13 1/2 lks
- Cor 6 N 1/2 a Sand Stone 16 in mo 1/2 S 17. 18
- " "one only B. found" a Maple 13 S 67 W 5 3/2 lks.
- " " a Do. 22 S 39 W 8 5 "
- Cor 7 a "Niggerhead" 20 mo 1/4
- " " No trees near
- Cor 8 a Sand Stone 16 in mo 1/4
- " a Sugar 15 S 53 E 12 3/4 lks
- " a Beech 24 N 68 W 35 "