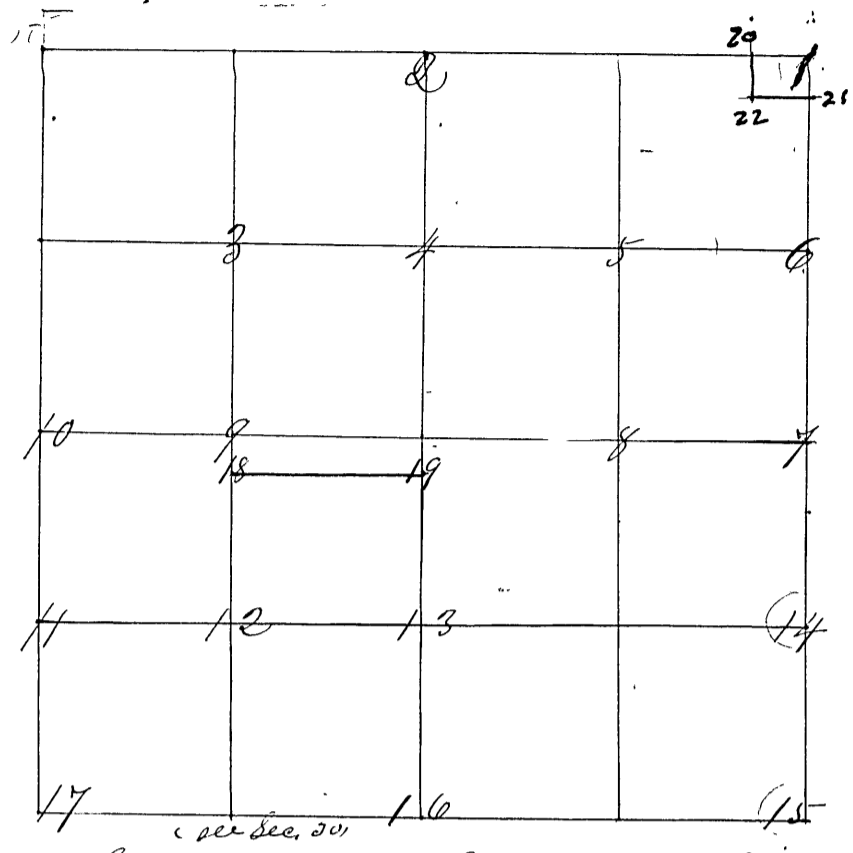


Surveyed by John H. Davis S. C. Co. Jan. 17<sup>th</sup>, 18<sup>th</sup> & 19<sup>th</sup> 1860  
corners set from 1 to 17



- 100 No. 1 Sand Stone marked S 17, S 18, S 19, S 20.
- " " Blue Flint 18 in long N 39 1/2 W 42 lks
- " " 2 Gray Flint 1/4 S.
- " " Pin Oak 15 in long N 38 E 62 lks
- " " Sugar 15 in di S 30 E 16 1/2 "
- " " 3 Flint Stone 1/8 S
- " " Red Oak 5 S 59 E 1 3/4 lks dist.
- " " W. Oak 5 S 20 1/2 E 25 1/2 lks.
- " " 4 Gray Flint 1/8 S.
- " " Sugar 15 N 45 W 13 1/2 lks
- " " Sugar 17 S 34 E 58 "
- " " 5 Sand Stone
- " " Sugar 18 N 55 W 13 lks.
- " " Sugar 12 S 59 W 60 1/2 lks
- " " 6 Sand Stone 1/8 S.
- " " (No bearing trees near)
- " " 7 Flint Stone 1/4 S 1/2 mi cor on E side
- " " { Original bearings } W. Oak 24 S 44 W 90 3/8 lks.
- " " { found } Beech 16 N 65 W 39 lks.
- " " 8 Gray Flint 1/8 S.
- " " (No bearing trees near)
- " " 9 Gray Flint 1/8 S.
- " " Sugar 19 N 84 E 33 lks.
- " " W Oak 15 N 45 W 41 1/2 "
- " " 10 Gray Flint 1/4 S 1/2 mi cor on N. S.
- " " Hickory 4 S 19 3/5 E 7 3/8 lks
- " " B. Oak 6 N 55 3/5 W 10 1/2 "