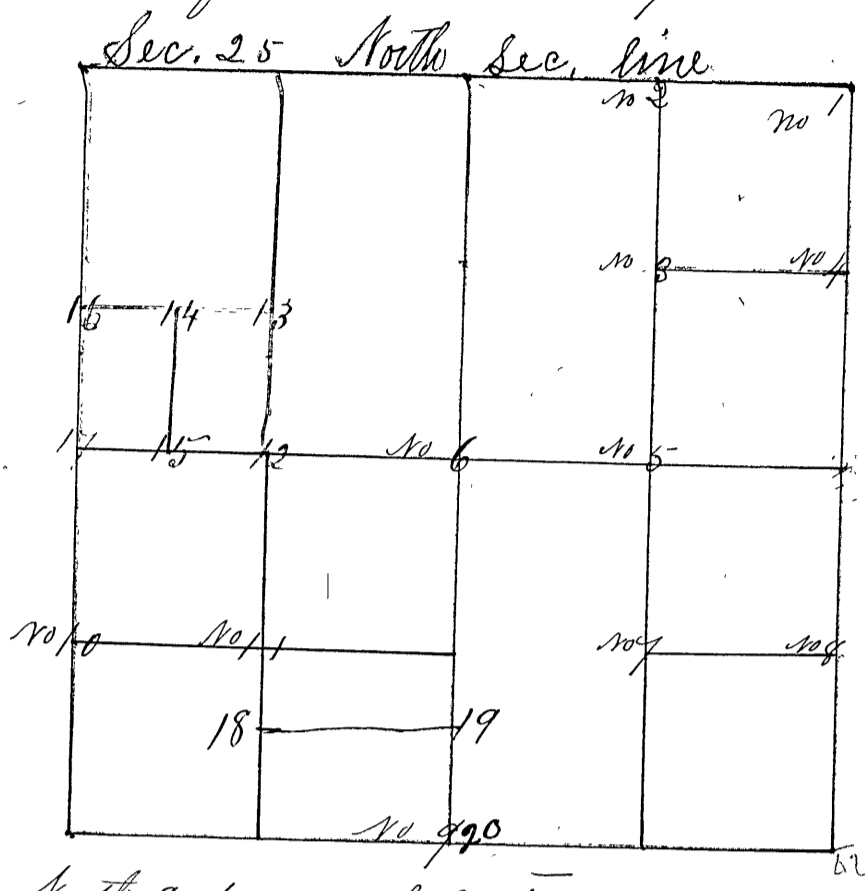


SECTION Twenty five, 25, TOWNSHIP Twelve (2)

Surveyed by John Peyton Deputy County Surveyor February 6 and 7<sup>th</sup> 1850 and corners set from No 1 to No 9



- Corner No. 1 North East corner of Section 25 (Witness Trees)  
" " " Beech 20 S 36 W 32 Links
- " " " Dog wood 6 N 10 E 25 Links
- Corner No 2 North Sect line E 1/4 m. corner Sand Stone 20 in long marked 1/8 S.  
" " " (W. T.) White Oak 20 S 44 W 35 Links
- " " " Hickory 20 S 61 E 44 Links
- Corner No 3 Center of North East quarter. Sand Stone 22 in long marked 1/6 S. (W. T.)  
" " " White Oak 15 N 64 W 67 Links
- " " " B. Oak 7 N. 4 E. 68 Links
- Corner No 4 North 1/4 mile on East Sec. line Sand Stone 22 in long marked 1/10 S  
" " " (W. T.) White Oak 20 S. 59 E. 97 Links
- " " " White Oak 20 N 76 E 114 Links
- Corner No 5 Center E & W. line, E 1/4 m. c., Sand Stone 2 feet long marked 1/8 S.  
" " " (W. T.) R. Oak 6 S 23 1/2 W 46 Links
- " " " Hickory 6 S 43 E 55 Links
- Corner No 6 Center of Section Sand Stone  
" " " (W. T.) Beech 12 S 47 E 18 Links
- " " " Hickory 18 N 16 W 36 Links "A, R"
- Corner No 7 Center of South East quarter Sand Stone 2 feet long marked 1/10 S.  
" " " (W. T.) Maple 5 N 13 W 34 Links
- " " " Maple 6 N 41 W 35 Links
- Corner No 8 East Sec. line South 1/4 m corner Sand Stone 2 feet long marked 1/10 S,  
" " " (W. T.) Hickory 12 S 64 W 4 Links
- " " " Beech 12 N 67 E 21 Links
- Corner No 9 South line 1/2 mile corner "A R" (See next Page)  
" " " (W. T.) Beech 20 S 15 W 16 1/2 Links
- Beech 18 S 55 W 19 Links