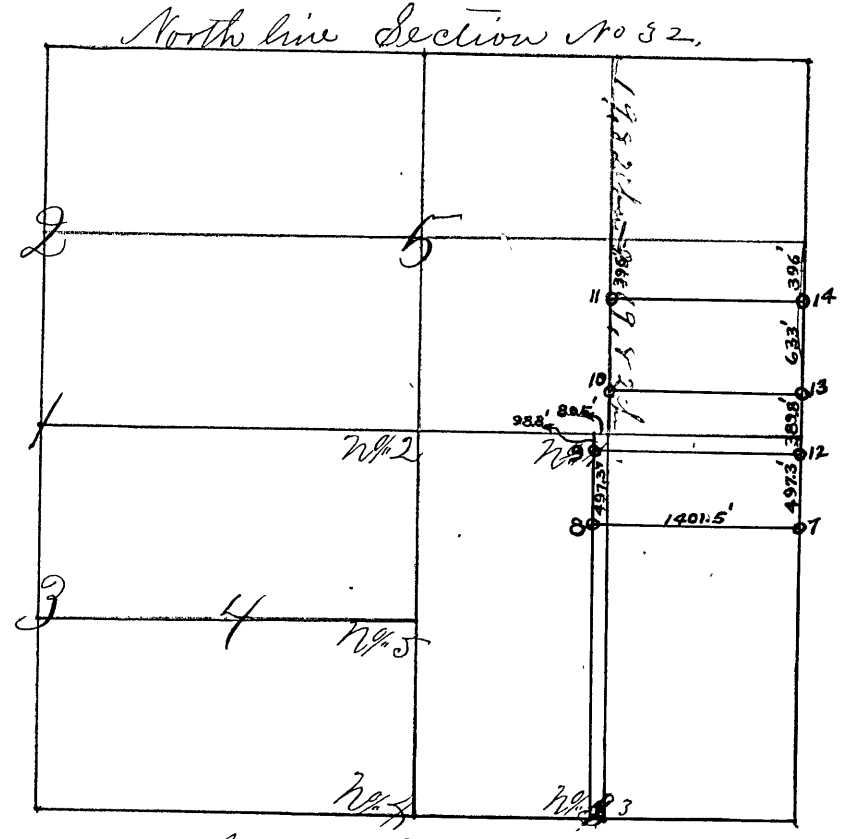


SECTION *Thirtytwo, 32,* TOWNSHIP *Towhee (12)*

Surveyed by John J. Peyton Deputy Co. Surveyor Feb-
 ruary 2nd 1850 corners 1 to 3



- Corner No. 1 a Sand Stone marked 1/8 S ⁶ E. & W 1/4 m
- " " " (Misc. Trees) White Oak 17 S 47 E 15 links
- " " " White Oak 25 S 59 W 25 links
- Corner No. 2 a Sand Stone center section mark 14 S
- " " " Beech 6 S 14 ^{deg} 50^m W 150 links
- " " " Black Walnut 2 S 25 E 147 links
- Corner No. 3 a Sand Stone S.E. c. of 1/2 of S.E. q. m. 1/8 S,
- " " " Hickory 10 S 82 W 24 links
- " " " Sugar 20 South 31 links
- " " " Corners Nos 4 & 5 perpetuated by Tom Herrow Dep. Co Surveyor
- " " " Jan. 20th 1859 by parties present and consent N. Gibbens
- " " " & Hardy Hicks chain carriers N. Gibbens marker
- " " " Variation same as lines about 6 ^{deg} West.
- Corner No. 4 a S. Stone 24 in (1/8) South 1/2 mile corner
- " " " White Oak 50 N 47 W 72 links
- " " " Ash 6 S 23 3/4 W 133 1/4 links

Surveyed by Homer Hicks Surveyor Gly Co.
 Jan. 17th & 19th 1874, parties interested
 present and consent to survey.

- Corner No. 1 at 1/2 m. Cor. on w. line of Sec,
 a Sand Stone 15 in long W. 1/4 S.
- a White Oak 14 S. 34 W. 50 links
- a Do. 24 S 9.25 E. 53 "
- Cor. No. 2 Middle of w. line of N.W. q. a S. 15 long on 1/16 S.
- An Elm 4 N. 70 W. 47 lks.
- a Buckeye 4 N. 26 E. 43 "