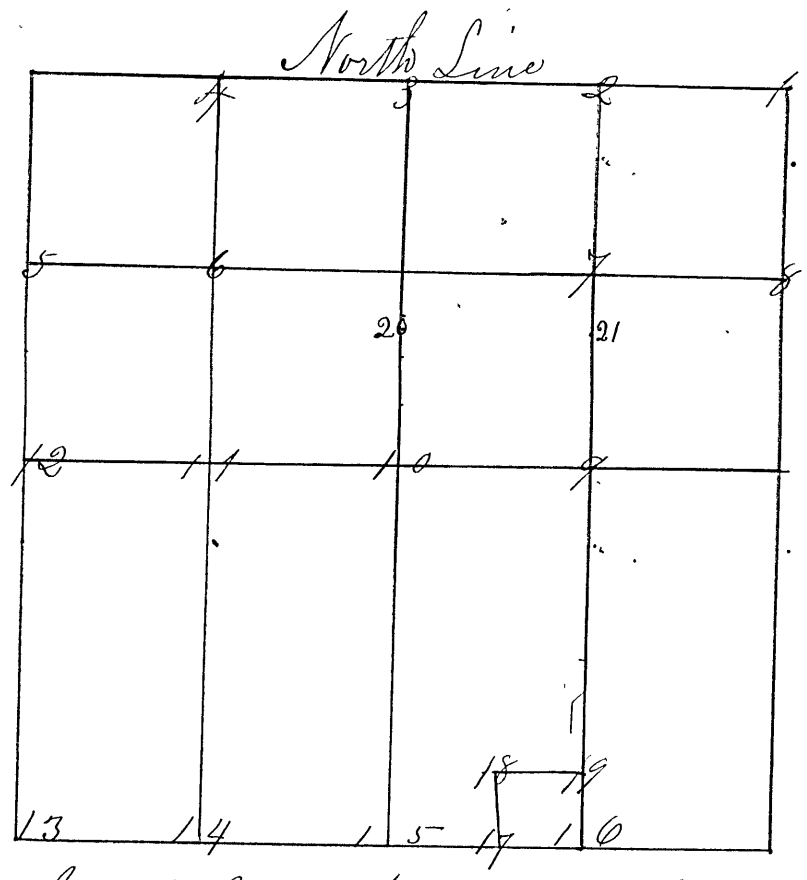


Surveyed by John A. Davis S. C. C. Jan 9th & 10th 186- corners 1 to 16



| | | | |
|-----|-----|------------|------------------------------------|
| Co. | No. | Material | Notes |
| " | 1 | Sand Stone | N.E. cor. marked S 27 S 28. 33. 34 |
| " | " | " | W. Oak 20 N 40 W 61 3/4 Sko. Dist. |
| " | " | " | W Oak 22 S 22 W 73 1/4 " |
| " | 2 | Sand Stone | " |
| " | " | " | W Oak 20 S 43 W 88 2/3 Sko. |
| " | 3 | Sand Stone | 1/4 S. 1/2 mi. cor. on N. side |
| " | " | " | Sweet Gum 6 N 27 1/2 W 88 Sko |
| " | 4 | Sand Stone | " |
| " | " | " | Elm 30 S 27 W 29 Sko. |
| " | " | " | Jack Oak 12 N 3 E 7 1/4 Sko. |
| " | 5 | Sand Stone | " |
| " | " | " | W Oak 6 N 68 E 28 1/2 Sko. |
| " | 6 | Sand Stone | " |
| " | " | " | Sweet Gum 6 S 35 E 24 1/2 Sko. |
| " | " | " | Ash 5 N 28 W 17 Sko. |
| " | 7 | Sand Stone | " |
| " | " | " | W. Oak 20 N 41 1/2 W 42 Sko. |
| " | " | " | W Oak 22 S 4 E 99 Sko. |
| " | 8 | Sand Stone | " |
| " | " | " | B. Oak 20 N 30 1/2 W 88 Sko |
| " | " | " | Huckory 12 N 18 E 85 " |
| " | 9 | Sand Stone | " |
| " | " | " | W Oak 22 N 73. 30 E 44 1/2 Sko. |
| " | 10 | S. Stone | " |
| " | " | " | W Oak 24 S 68 W 46 Sko |
| " | " | " | W Oak 36 S 62 E 5 " |