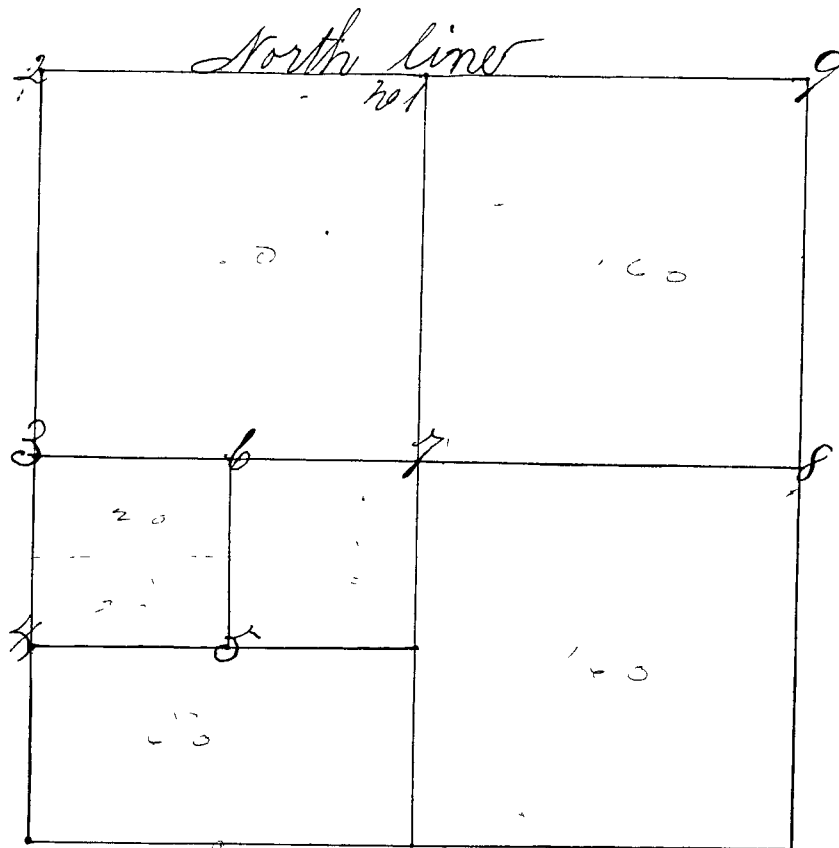


Surveyed March the 3^d and 4th 1864 by J F Ferris County Surveyor to &c.
 after due notice being given in the Clay County Democrat 3 times Vol,
 Chain carriers Mrs P. John Steed sworn as the Law directs and corners
 set from 1 to 9 mine



Remarks by P. J. Luther
 (Mr Ferris gives no
 account of cor. 5 & 9)

See Record
 No. 2
 Page 30
 (Robertson)

- No 1 Sand Stone 1/4 S North line (1/4)
- " " " " " " " " " " " "
- " " " " " " " " " " " "
- No 2 a S. Stone cor. 6 and 7 NW
- " " " " " " " " " " " "
- No 3 a Stone 1/4 S West line
- " " " " " " " " " " " "
- No 4 a S. Stone
- " " " " " " " " " " " "
- " " " " " " " " " " " "
- No 5 a S. Stone 1/4 S
- " " " " " " " " " " " "
- " " " " " " " " " " " "
- No 6 a Stone x 20 i. long
- " " " " " " " " " " " "
- No 7 a S. Stone 1/4 S. cen Sec.
- " " " " " " " " " " " "
- " " " " " " " " " " " "
- No 8 a "Niggerhead" East line 1/4 S
- " " " " " " " " " " " "
- " " " " " " " " " " " "

Niggerhead rest at same point
 April 16th 1872 old bearings
 taken Mrs. Brist S. E. E