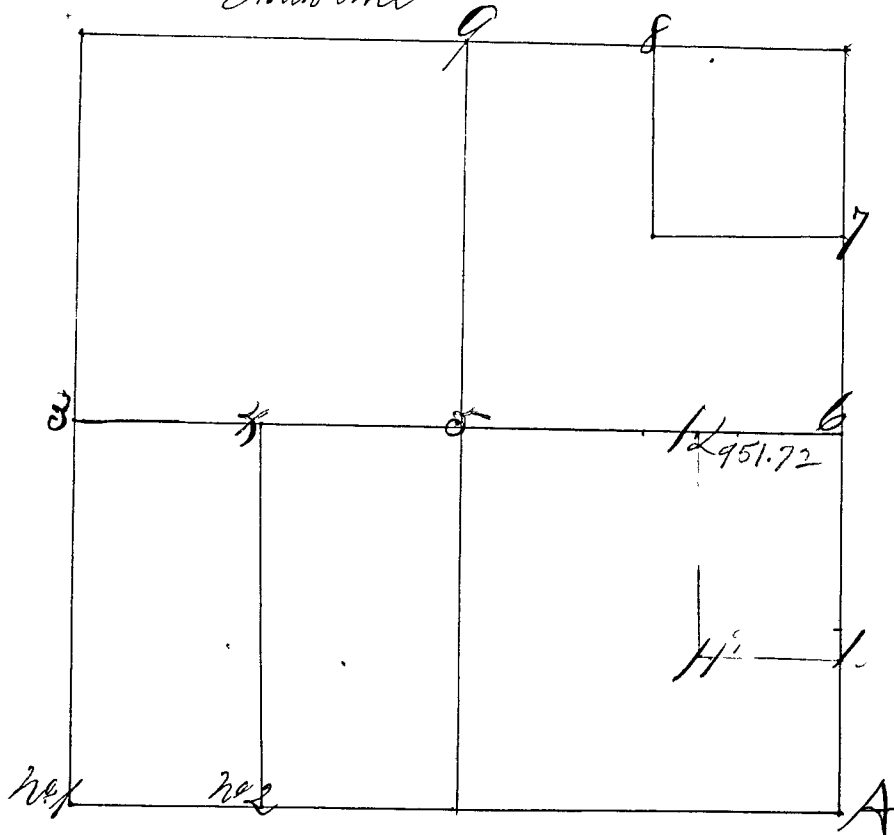


Surveyed January 27th 28th & 29th 1864 by S. J. Ferris County Surveyor
 chain carriers Geo. Trump, Arthur Butt and sworn as the Law di-
 rects and corners set from 1 to 9
 North line



- No 1 S. Stone T13 Sec 15, 16, 21, 22
- " " w W. Oak 30 N 7 1/2 E 103 Sks.
- No 2 w S Stone 12 x 18 S
- " " w W. Oak 30 S 8 1/2 E 54 S.
- No 3 S Stone 18 mar. 1/4 S West side
- " " Jac. Oak 30 S 75° 30' E 48 "
- No 4 S Stone marked 1/8 S.
- " " w Ironwood 4 S 39° 15' W 5 1/2 "
- " " w do 4 N 29 1/2 W 3 1/2 "
- No 5 w "Niggerhead" 1/4 S. center of section
- " " w Elm 24 S 40 1/2 E 15 1/2 "
- " " Sugar 24 N 5 W 5 3 "
- No 6 w S. Stone 1/4 S East side
- " " w Sugar 12 S 10 W 7 1/2 "
- " " w Birch 18 N 66 W 4 1 3/4 "
- No 7 S Stone 18 S
- " " w Elm 4 N 18 E 19 "
- No 8 w "Niggerhead"
- " " w Sugar 12 S 16 3/4 E 6 3/2 S.
- " " w Sycamore 30 S 48 E 7 3/2 "
- No 9 w "Niggerhead" 1/4 S
- " " w Birch - S 8 E 6 8 1/2 "
- " " w W Oak - S 60 E 14 1/2 "