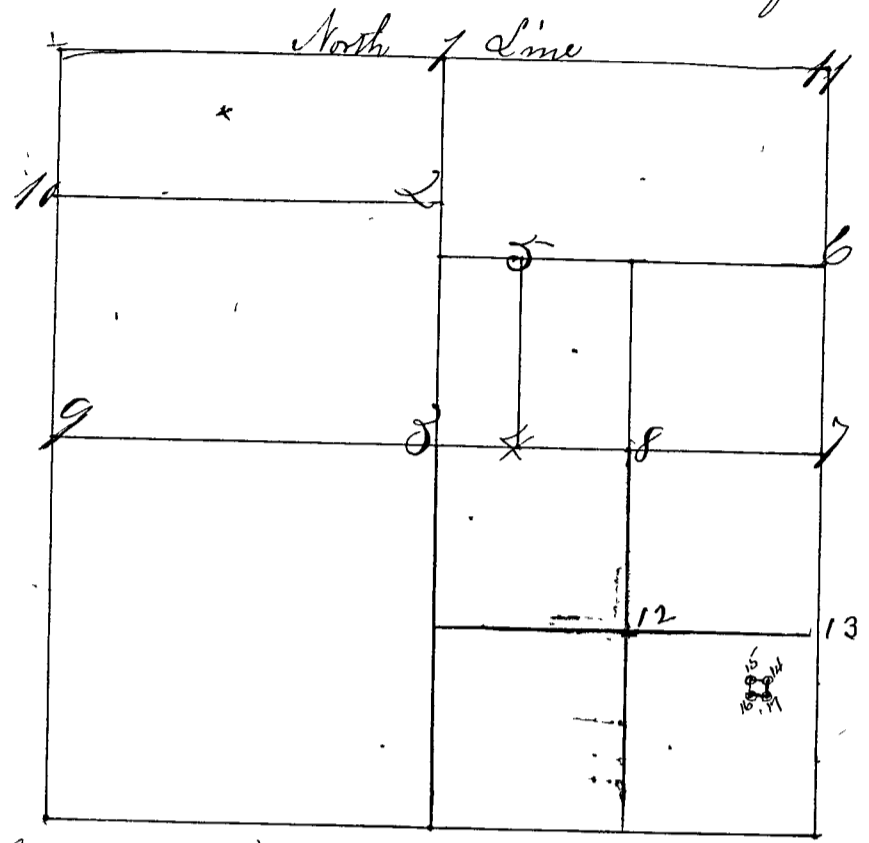


Surveyed by S. F. Ferris County Surv. Feb. 29 March 1<sup>st</sup> 3<sup>rd</sup> 5<sup>th</sup> 1867. after Lawful notice being <sup>given</sup> in Clay County Democrat 3 times in succession Vol. 7. chain carriers Wm. Bell, John Stallcup and John Steed all sworn as the Law directs corners set from 1 to 11



- No 1, a S. Stone 13' 14' S N. line
- " " a Hickory 24 N 29 1/2 W 44 3/4 Sks.
- " " a W. Oak 18 S 68 W 118 1/2 "
- No. 2 a "nigger head" 17 chains 53 Sks South of No. 1
- " " Hickory 20 S 88 1/2 W 53 S.
- " " a Beech - N 13 1/2 W 59 1/2 "
- No 3 S Stone 14 S
- " " a Walnut 5 S 60 1/2 E 39 "
- " " a Beech 24 S 89 1/2 W 19 "
- No 4 a S. Stone 18 x long
- " " a Beech 18 N 61 1/2 W 11
- " " a Do 2 S 29 E 18
- No 5 a Stone
- " " a Beech 15 S 4 E 17 S
- " " a Do. 12 S 18 E 10 "
- No 6 a Stone x
- " " a Beech 18 N 17 W 22 1/2 "
- No 7 a Stone 1/4 S East side
- " " a Beech 12 S 55 E 24 1/2 "
- " " a do 12 N 18 W 7 1/2 "
- No 8 a "nigger head"
- " " a Hickory 20 S 50 E 27 1/4 "
- " " a W. Oak 36 S 44 W 48 "