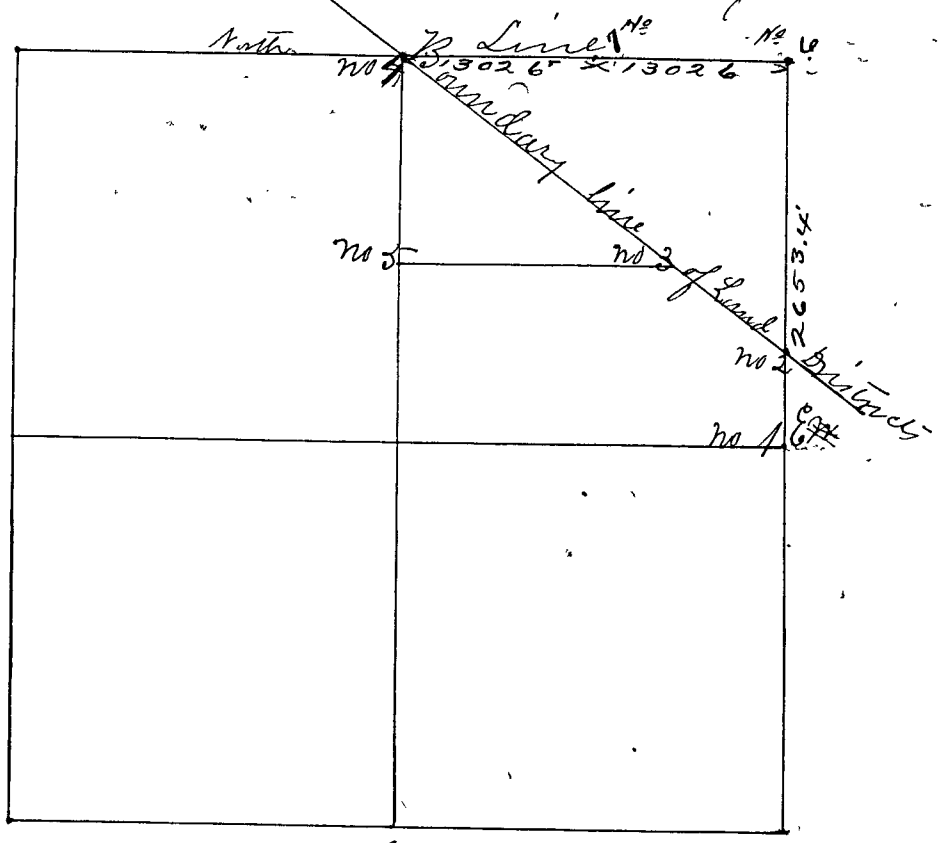


SECTION Twentyfour (24), TOWNSHIP Thirteen (13)

Surveyed by Hon Herrow County Surveyor of Clay Co. Mo. March 8th 1855 Variation of corners same as lines, Parties present and consent, Chain carriers &c. sworn according to Law,



- Corner No 1 a Stone marked 1/2 East 1/2 mile corner
 (Witness Trees) Original tree, Beech 12 North 17 Links
 Beech 8 S 79 W 89 Links
- Corner No 2 a Stone East line and Boundary line
 (Witness Trees) Original trees failing new trees taken
 Beech 12 N 72 E 50 Links
 Sugar 12 S 75 W 49 Links
- Corner No 3 a Stone, Boundary line 46 Poles & 3 Links North West of corner No two,
 (Witness Trees) Hickory 20 S 16 1/2 W 4 1/2 Links
 Dog wood 3 S 8 1/2 W 7 Links
- Corner No 4 a Stone marked 1/3 North 1/2 mile & Boundary line
 (Witness trees) Beech 18 N 46 1/2 W 12 L;
 as taken formerly by Peyton,
 Ash 8 S 51 E 29 1/2 Links
- Corner No 5 a Stone center N & S line 88 Poles South of corner No 4 lacking 3 inches
 Witness trees Maple 6 S 16 E 9 L
 Beech 6 N 14 W 11 L

Furthered Surveyed by George A. Sheehan Deputy County Surveyor May-6-7-1909. Parties present and consenting to survey. Chainmen sworn according to law

- Corner No 4. Rest Buried Sand Stone
- " " " Pin Clin 12" N 40° 0' E 33.2 Feet.
- " " " Sand Stone N 89 1/2 W 13.4 "