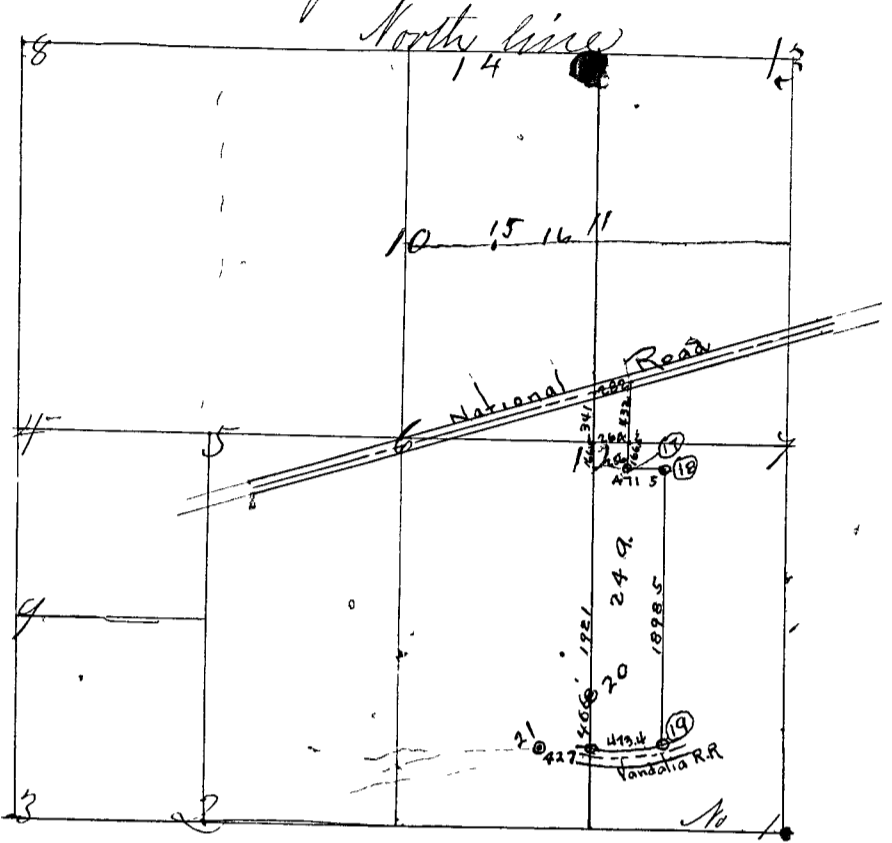


SECTION Twenty seven (27) ; TOWNSHIP Thirteen (13)

Surveyed March the 8th 9th 10th 1864 by S. J. Ferril
 Surveyor Clay County after lawful notice being given in the
 "Clay County Democrat" 3 times in succession, and 7 chain
 carriers from the Dickens farm Barnes corner set from 1 to 9
 North line



- No 1 S. East corner w. stone
- " " w Sugar 12 S 27° 30' W 80 "
- " " w 50 8 S 10 W 93 "
- No 2 S Stone 1/8 S
- " " w Beech 18 N 85 W 60
- " " w W Oak 30 S 39 E 35 "
- No 3 a Line Stone cor 27, 28, 33, 34
- " " w Sycamore - S 89 E 70 " Lks,
- " " Stone x W East 50 "
- No 4 a Line Stone 1/4 S West side w
- " " w W Oak 30 S 7 1/2 E 76 L,
- " " w Beech 24 S 54 E 39 "
- No 5 a Stone
- " " w Ash 10 N 7 1/4 E 43 1/2 L,
- " " w Sweet Gum 20 S 71° 30' W 17 1/2 "
- No 6 a Stone 1/4 S cor. of Sec,
- " " w W Oak 30 S 47 W 21 Lks
- No 7 a Stone 1/4 S East side
- " " w Jam Cherry 2 E 26 Lks.
- " " w Stone marked W West 40 "
- No 8 Stone cor sec's 21, 22, 27, 28
- " " w W Oak 3 S 76 E 210 Lks
- " " Two small stones under the corner rock
- No 9 a Stone
- " " w W Oak 24 S 85 E 72 1/2 Lks