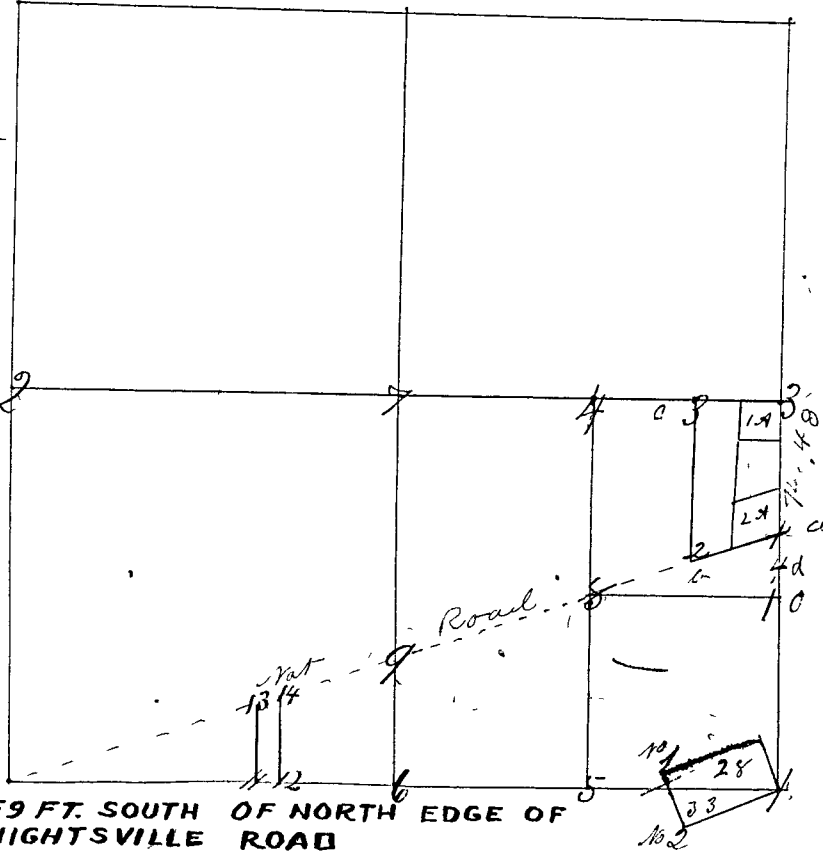


Part of Sect. surveyed by George V. Goshorn C.S. November 28 & 30<sup>th</sup> 1864 parties inside S.E. gr. sec. concerned present & consent chain carriers Thomas Brooks and John Hardwick first day Isaac Marks, John Marks second day. all duly sworn according to Law variations 5 deg 4 min west, parties agree on the N.E. cor of S.E. gr.

Corners 11, 12, 13 & 14 set by Homer Hicks, Dept. Sur. of Clay Co. Ind. April 12<sup>th</sup> 1882 - Survey made by request of Taylor Nicolson, Ira Studly and John Chance Chainmen.



See Record No 9 Page 20. (Robertson)

Terrill's cor correct took same bearings set south of Terrill's corner

- a 1 Thence run south to 45 rods 3 lks. set 1 corner stone no 1 marked 1/2 from which S Stone 12 N 10 lks. S Stone 14 S 73 W 5 lks.
- b 2 Run S 73 W (no var) 39 rods 22 lks. set cor no 2 in 1/2 from which S Stone 16 North 10 lks S Stone N 73 E 5 lks
- c 3 Run north to half sec. line set 1 stone cor no 3 made 1/2 10 in long from which west a stone 10 to 10 lks. S a stone 6 5 lks.
- d 4 Run 2 37 rods 22 lks to place of beginning From cor 1 run south 13 1/2 feet then S 73 W 10 1/2 feet set stone no 4 at S.E. cor Lot 1 Town Harmony from which stone W 27 lks Stone N 13 lks cor no 1 placed on sec line as above described on E side in its proper place cor 3 placed as above described distance and at an angle of 10 from sec line said gr. sec. line not run through sec. 28 cor no 3 being near gr sec. line of 28 permitted to be corrected when said gr. sec. line of sec 28 is established cor 1, 2 & 3 set at request of citizens concerned of S.E. gr of Sec 28.

So much as is shown in diagram at S.E. corner of sec. 28 was surveyed by P. J. Luther Sur. C. C. Ind. May 22nd 1867 that portion lying in sec 28 parties were notified by three weeks publication in Aurora Borealis and the in sec. 33 by consent of James Robinson and (names) Chainmen