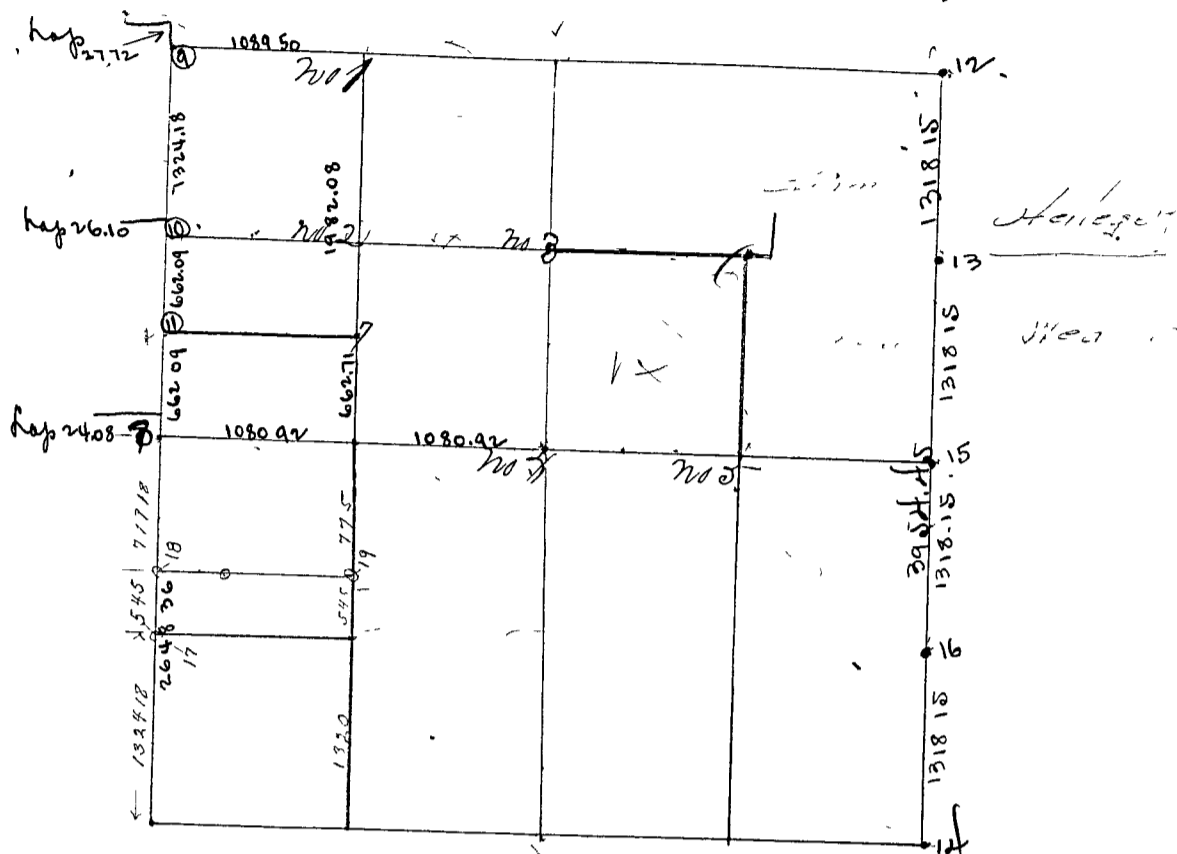


SECTION Thirty (30) TOWNSHIP Thirteen (13)

Surveyed by J. J. Peyton Surveyor Clay County and corners from 1 to 2 parties present - chain bearers and markers sworn according to Law March 1854



Corner No 1 In center between NW corner and half mile first Sand Stone marked by

Edm 12 S 80 E 23 S

Hickory 7 N 64 W 7 1/2 "

Corner No 2 S.E. corner of NW gr. of NW gr. Sand Stone marked by S

W Oak 30 S 25 W 39 "

B. Gum 13 S 41 E 50 "

Corners No's 3, 4, 5, 6 - perpetuated Sept. 16<sup>th</sup> 1857 by

Wm Herron Dep. Co. Surv. chain carriers James Rardin &

Manley Armharkit

according to Law. Parties present

mutual consent

Corner No 3 a Stone 12 in N & S on line N 1/4 cor

" " "

(W.T.) White Walnut 5 N 4, E 44 Links

" " "

White Walnut 3 1/2 N 80 E 1 Link

Corner No 4 a Stone center of section 30

" " "

(W.T.) Burr Oak 10 N 28 E 11 Links

" " "

Jack Oak 18 S 74 1/2 E 10 Links

" " "

White Oak 9 N 76 1/2 W 23 Links

Corner No 5 - Sand Stone S.E. & W line E 1/4 m e

(W.T. - Trees) Red Oak 2 1/2 in S 39 E 19 d

White Walnut 16 N 27 W 50 Links

March 23 1857

White Oak 10 N 76 1/2 W 23 Links

W. Herron S. G. C.