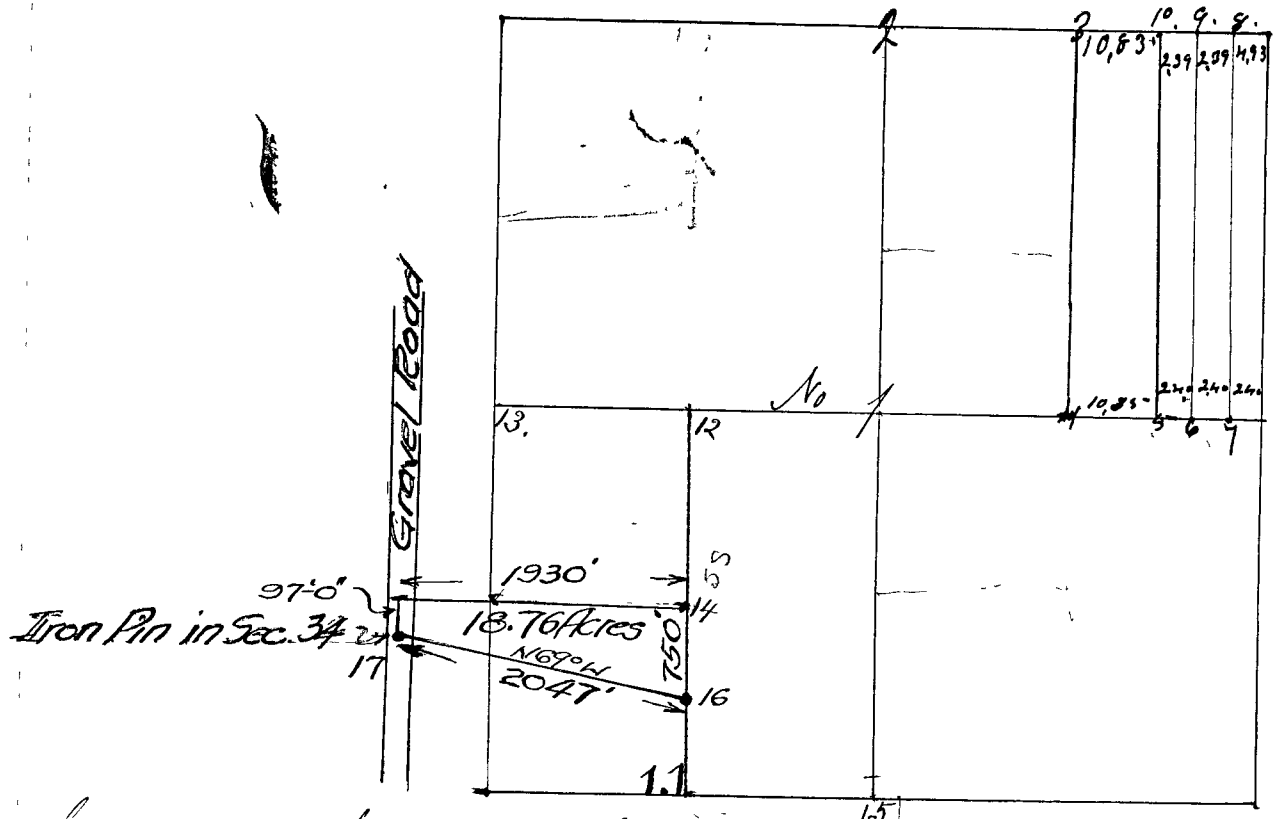


Surveyed by Wm. Herrow Deputy Co. Surveyor Parties present
 mutual corner center corner set June 2nd 1858 and witness
 trees taken. chain carriers John Killion & G. W. Nicholson
 flagbearer Henry N. Killion marker Wm Nicholson all
 sworn as the Law directs. Variation W. of witness trees 6 deg.



Corner No 1 a Sand Stone 24 in center corner in the East bank of Broys creek
 Wit. Trees, Sugar 12 S 0 2 1/2 E 2 1/2 Links
 Sugar 15 - N 5 west 13 1/4 Links level or horizontal

Further surveyed by M.B. Crist November the 28 1870 by M.B. Crist
 by request of Parties interested in Partition

- Corner No 1 reestablish by putting a new Stone Sand Mt Old bearing the same
- " " 2 Middle North line set Sand Stone Mt 53 - Original B found
Wit Sycamore 30 S 2 1/4 40 Mks
- " " 3 Middle N line N. E. q. } Sand Stone set 53 Mks west of corner from which
- " " a Bush 10 S 36 1/2 E 10 Mks
- " " 4 Sand Stone Mt set west of 1/2 sec on Bush 14 N 22 E. 40
- " " 5 Sand Stone Mt 7 in long set East of No 4 10, 8 1/2 ch
- " " 6 Sand Stone Mt + 18 " " " " " " 5 - 2 1/2 ch
- " " 7 " " " 14 " " " " " " 6 2 1/2 and 4 9/10 Chains West of 1/4 cor
- " " 8 Niggerhead 12 " " " West " " N.E. cor of sec 493 Mks
- " " 9 Sand Stone 6 by 12 Mt West of No 8 2 39/100 ch } Elm 8 14 - 29
- " " 10 " " " " " " " " 9 2 39/100 ch

M.B. Crist