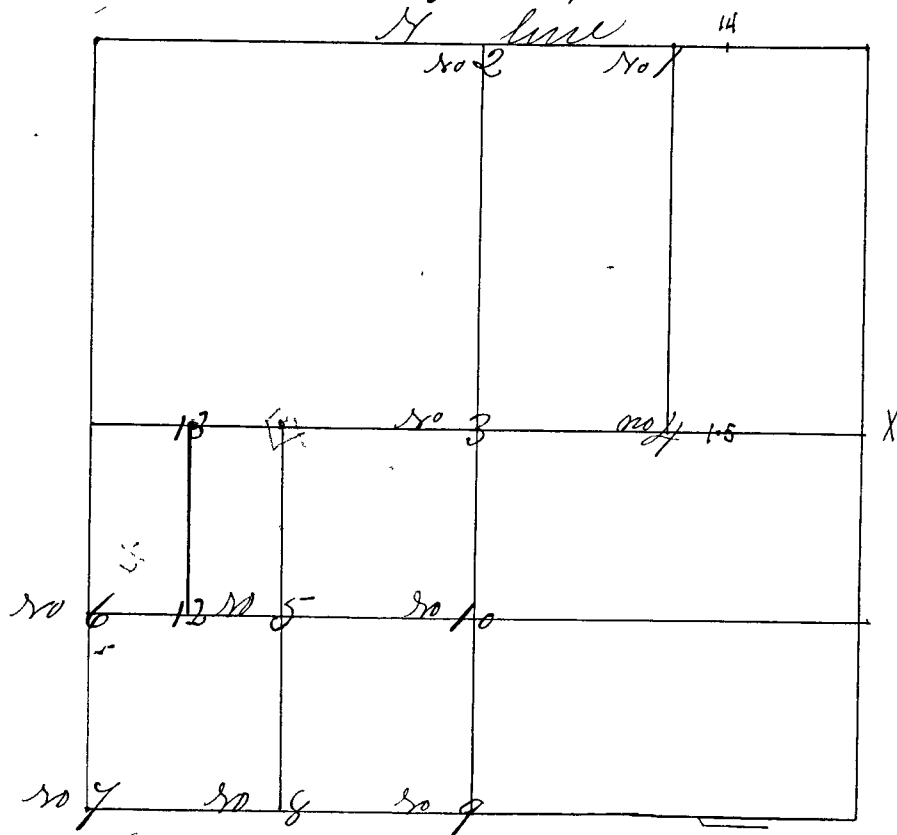


Surveyed by Ann Herron County Surveyor March 22nd 1855 ^{not} notice being given and Parties and agents present or consent. Variations West Taken according to lines and corners set from one to nine inclusive Chain carriers and flag bearers & marker sworn to James Hayes, Adam Carpenter, Andrew Reem and Edmoth Jeffere



- Corner No 1 Stone N. line East 1/4 mile corner
- " " " Witness Trees East 1/4 mile corner South line section
- " " " No 35 Town 12 North Range West met 50 Links
- " " " Jack Oak S 89 E 30 1/2 Links
- Corner No 2 Stone marked 1/2 S North line 1/2 mile corner
- " " " Wit Trees Jack Oak 48 18 W 24 6 Links
- " " " Jack Oak 38 12 1/4 E 19 6 Links
- Corner No 3 a Stone center of Sec. No 2 T 11 R 7.
- " " " (Witness Trees) White Oak 15 N 15 W 21 Links
- " " " White Oak 24 S 23 1/4 E 22 Links
- Corner No 4 a Stone center E & W. line E 1/4 m. c.
- " " " Witness Trees, Jack Oak 34 N 80 E 34 1/4 Links
- " " " White Walnut 38 13 E 2 1/4 Links
- Corner No 5 a Stone center South west quarter Sec.
- " " " Witness Trees, White Oak 12 S 7 E 39 Links
- " " " White Oak 18 S 2 2 1/4 W 9 1/4 Links
- Corner No 6 a Stone West. Sec. line S 1/4 SW corner.
- " " " Wit Trees, Hickory 0. S 32 1/2 E 21 1/4 Links
- " " " White Oak 15 S 62 W 28 Links
- Corner No 7 a Stone marked Section 2, 3, 10 & 11
- " " " (Witness Trees) White Oak - N 66 E 24 Links ^{original}
- " " " Elm 10 N 49 W 65 1/4 Links

South Section corner and one tree set