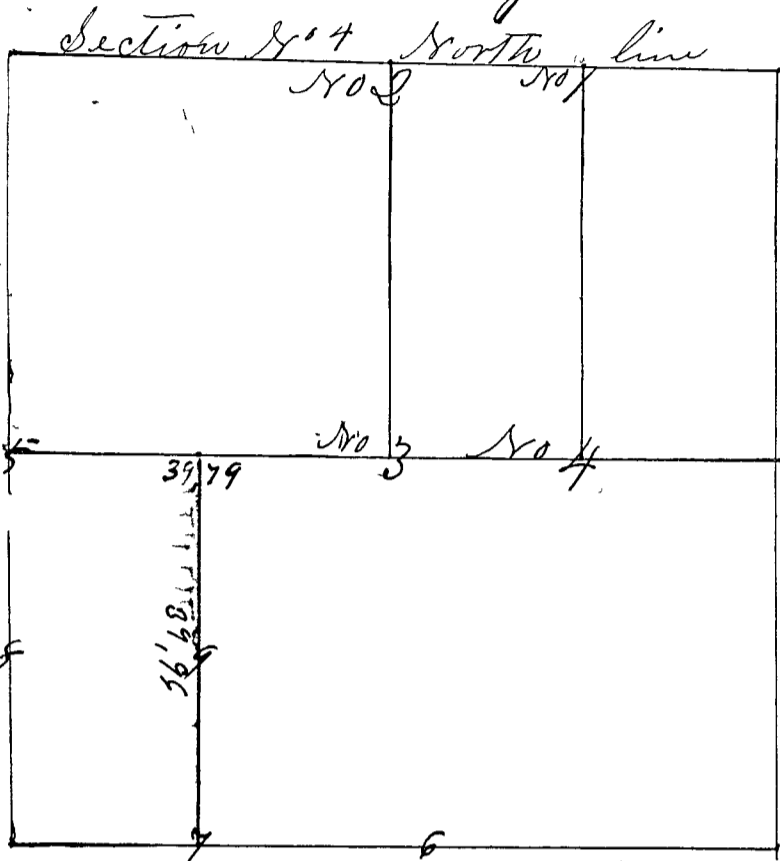


Survey commenced Jan. 21<sup>st</sup> 1850 agreeable to notice published in the "Terre Haute Journal" 3 weeks in succession cont. Vol. 2<sup>nd</sup> No. 16 Jan. 4. 1850. Dated Dec. 26<sup>th</sup> 1849 Surveyed Wm Brown & S. Wilbur Tress taken at 5 deg Variation W.



- Corner No 1 a Stone East 1/4 mile North line
- " " " White Oak 20 in No 8 31 Links
- " " " Corner Stone South East 1/4 mile on S line of Sec. 33. 412 R 70, west with T. line 132 S.
- Corner No 2 a Stone North 1/2 of Section
- " " " Hickory 6 in No 6 31 Links
- " " " Black Oak 4 1/2 27 1/2 No 3 Links
- Corner No 3 a Stone center of Section
- " " " Hickory 12 No 1 Link
- " " " Hickory 9 No 6 No 2 1 Links
- Corner No 4 a Stone East 1/4 mile c. center line
- " " " White Oak 20 No 65 8 3 Links
- " " " Black Oak 10 No 79 1/2 No 146 Links

Further surveyed by M. B. East February 22 A.D. 1871 on sections 5-6-9

- Corner No. 5 Quarter section cor on West line sand stone 50 in long 24 1/2 28 1/2
- " " " Sand stone 36 in long 24 1/2 28 1/2
- " " " No 4 27 1/2 No 17 1/2 4 No 8 8 1/2 No 3 4 1/2
- Corner No. 6 Quarter section cor on South line sand stone 11 1/2 5 4 1/2
- " " " B Oak 18 No 4 1/2 4 1/2
- " " 7 Middle S. line 5 in gr sand stone 30 in long 24 1/2 28 1/2
- " " " W Oak 18 1/2 24 1/2 4 1/2
- " " 8 1/2 Oak 8 1/2 29 1/2 9 1/2
- " " 8 Middle West line S. M. gr sand stone 2 1/2 1/2 2 1/2 1/2 near
- " " 9 center of S. M. gr Boulder 1 1/2 B Oak 10 1/2 34 1/2 8 1/2 No 8 1/2