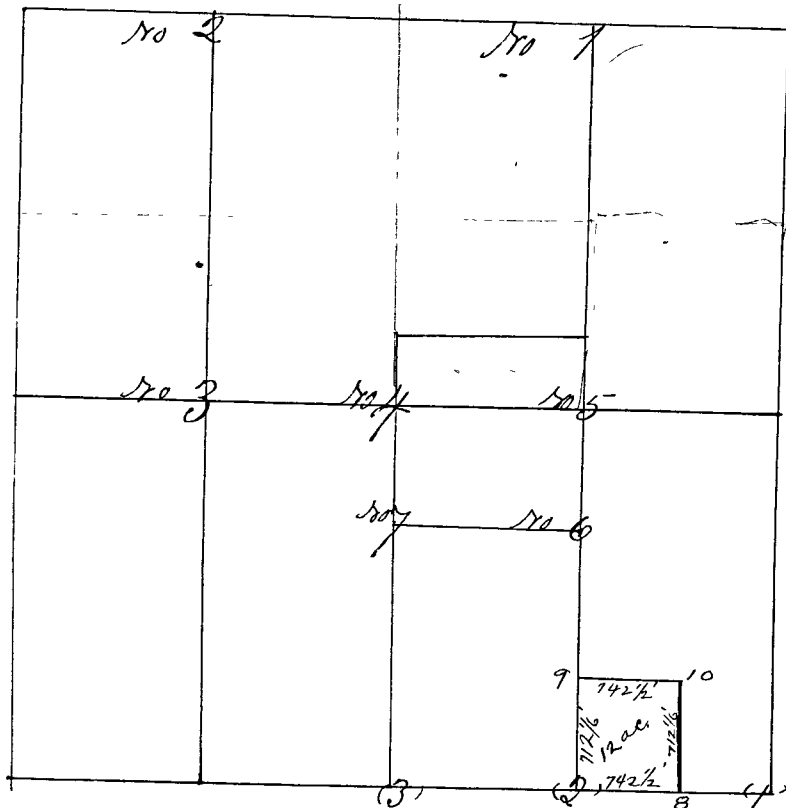


Surveyed by Wm Herrow Deputy Co. Surv. commenced agreeable to notice published in the "Brazil Weekly News" Dec. 15<sup>th</sup> 1856 No. 29 vol 1 &c. 3 times. Survey commenced Jan. 12<sup>th</sup> 1857 and continued for information from Commissioners of "General Land Office" to May 4<sup>th</sup> 1857 John Rector, John W. Griff, Wm. Turner M. Philips, Thomas W. Griff & Wm. H. Rector. Chain carriers George Rector marker all sworn according to Law and Survey completed location of witness trees &c same as lines



Remarks:

Corner No. 1 273 on South

line are recorded with Sec. 107 next Page.

- Corner No 1 a Stone N. Sec. line  $\frac{1}{4}$  m. corner  
 (Witness Trees) Black Oak 7 N 20 1/2 W 75 Links  
 Sycamore 4 1/2 E 7 1/2 Links
- Corner No 2 a Stone N Sec. line  $\frac{1}{4}$  m corner.  
 Hickory 7 8 9 3/4 W 25 L  
 White Oak 6 5 3 6 3 9/2 L.
- Corner No 3 a Stone cen. E & W. line  $\frac{1}{4}$  m. e.  
 Poplar 10 N 48 E 63 3/4 L.  
 Black Oak 7 8 4 1/2 E 20 L.
- Corner No 4 a Stone center sec. No 6  
 Black Gum 24 S 2 1/2 E 37 L.  
 Hickory 3 N 6 1/2 E 9 1/2 L.
- Corner No 5 a Stone cen E & W line  $\frac{1}{4}$  m. e.  
 Black Oak 6 8 6 1/2 E 28 L.  
 White Oak 4 N 2 W 53 L.
- Corner No 6. a Stone About 2 1/2 Poles N of S, E. gr S.  
 Black Gum 3 N 72 W. 4, 34 L.  
 Black Oak 3 S 1 East 12 Links
- Corner No 7 a Stone N & S. cen. line about ~~about~~ one hundred and nine Poles north of S 1/2 m.  
 White Oak 24 S 89 W 48 L.  
 Hickory 6 N 15 E 17 L