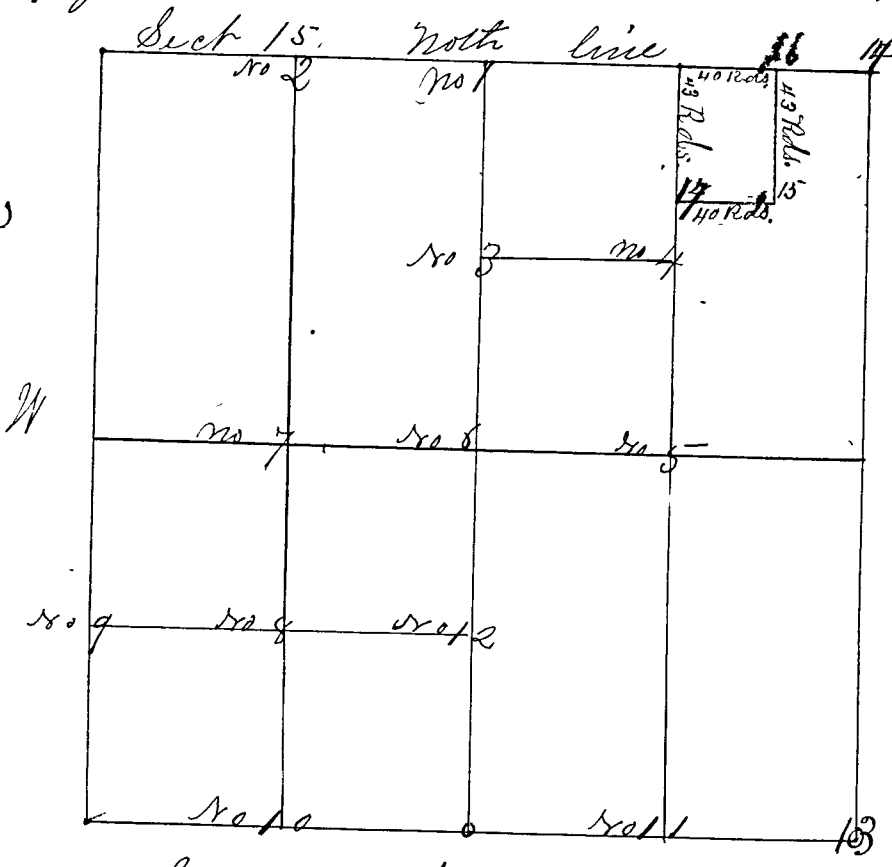


SECTION Fifteen (15), TOWNSHIP Eleven (11)

Surveyed by Mrs Herrow Deputy Co. Surveyor to John F. Peyton Co. Surveyor, Bearing of Nitrep Trees taken at 5. Deg. Variation West Dec. 28th 1859. for corners Nos 1 to 11. no. 12 some months after.

See Record No. 2 Page 2



See Record (P. 2) No. 2 for "Lat" Survey of Corner 13 Robertson

- Corner no 1 a Stone; north 1/2 mile (marked)
- " " " Nitrep Trees Hickory 18 in dia West 12 links
- " " " Hickory 12 S 8 1/2 W. E. 79 links
- Corner No. 2 a Stone; N. line W 1/4 m. corner.
- " " " White Oak 24 S 20 W 16 links
- " " " White Oak 30 S 4 E. 70 links
- Corner No 3 a Stone; center between nos 1 & 6,
- " " " Black Walnut 2 in dia S 65 W 93 links
- " " " Hickory 2 S 8 3/4 E 251 links
- Corner No 4 a Stone center of N.E. quarter.
- " " " Jack Oak 4 N 60 E 22 links
- " " " White Oak 3 N 5 1/2 W 30 links
- Corner No 5 a "White Oak Post" E. E. & N. l. E 1/4 mile
- " " " White Oak 20 N 73 W 7 1/2 links
- " " " Hickory 15 S 64 E 2 1/2 links
- Corner No 6 a Stone; center of Section
- " " " Black Oak 28 N 4 7/2 E 7 links
- " " " Hickory 3 S 83 W 28 links
- Corner No 7 a Stone; do. E. & W. line W 1/4 mile.
- " " " Hickory 12 N 12 E 18 1/2 links
- " " " Red Oak 6 S 88 W 4 7/2 links
- Corner No 8 a Stone; center of S.W. quarter.
- " " " Hickory 10 N 73 W 58 links
- " " " Hickory 18 S 6 7/2 E 23 links
- Corner No 9 a White Oak tree N. line S 1/4 mile
- " " " Hickory 10 N 19 W 59 links