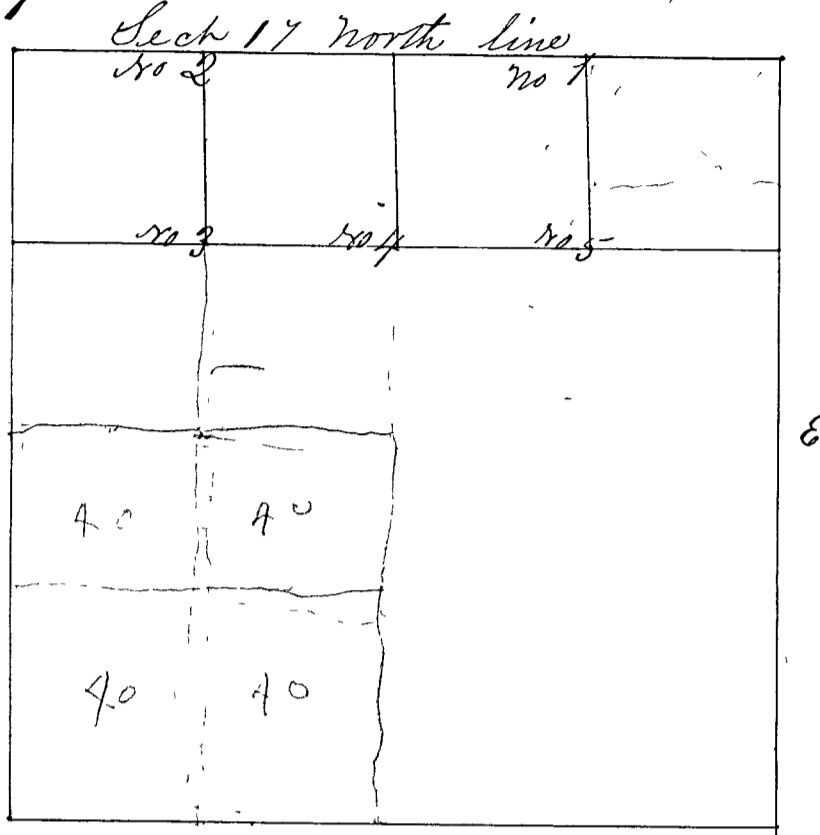


Survey commenced and finished the first & second weeks in March 1851. Bearing of witness trees taken at 5 deg. west variation Personal notice being given to those concerned in said Survey one corner only. Wm Herrow & S, & S,



- Corner No 1 a Stone, north line East $\frac{1}{4}$ m. c.
- " " " (Witness Trees) Jack Oak $\frac{1}{2}$ S. 53 $\frac{1}{4}$ E. 224 Links
- " " " Jack Oak 6 S. 81 W. 243 $\frac{1}{2}$ Links
- Corners nos 2 to 5 Inclusive Perpetuated by Wm Herrow & deputy County Surveyor March 1st 1854 notice by E. Gilbert (consent all present)
- Corner No 2 a Sand Stone North, S line $\frac{3}{4}$ m
- " " " (Witness Trees) Black Oak 5 N 40 E 32 Links
- " " " Black Oak 6 S 70 E 24 $\frac{1}{2}$ Links
- Corner No 3 a Sand Stone center of NW quarter
- " " " (Mt. Trees) White Oak 5 N 45 $\frac{1}{2}$ E 21 $\frac{1}{2}$ Links
- " " " White Oak 8 N 29 $\frac{1}{4}$ W 20 Links
- Corner No 4 " Sand Stone $\frac{1}{4}$ mile center N & S line
- " " " (Witness Trees) Black Oak 2 S 71 $\frac{1}{4}$ E 42 Links
- " " " Black Oak 6 N 49 $\frac{1}{2}$ W 67 $\frac{1}{2}$ Links
- Corner No 5 a Sand Stone center of N.E. quarter section
- " " " (Mt. Trees) Jack Oak 6 S. 14 E. 53 Links
- " " " Jack Oak 6 N 5 W 102 Links