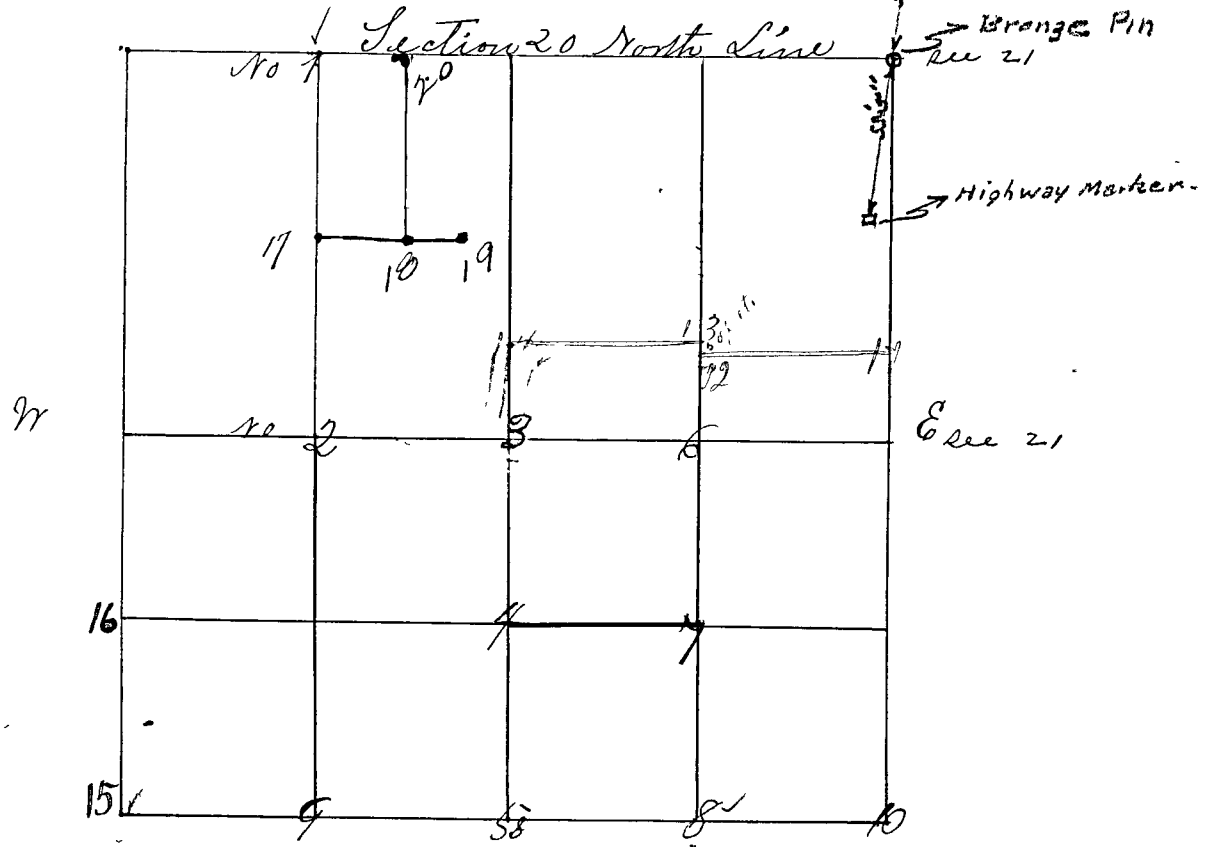


SECTION Twenty 20, TOWNSHIP Eleven 111

Surveyed by Wm Herrow Deputy Co. Surveyor to John J. Peyton & S.
 Bearing of witness trees taken at a variation of 5 deg. N. for corners
 Nov. 19th & Nov. 27th 1840



- Corner No 1 a Stone N line west 1/4 mile corner
- " " " Witness Trees White oak 20 N 3 N 5 1/2 Links
- " " " Hickory 18 South 2 1/2 Links
- Corner No 2 a Stone; center E & W line W 1/4 SW corner.
- " " " Hickory 10 N 24 E 6 1/2 Links
- " " " Hickory 8 N 23 1/2 W 5 3 Links

Further Surveyed by M. B. Criss Surveyor of Clay Co. on
 March the 2^d 1870 after due notice

- Corner No 1 (old stone destroyed) Down Hickory Stake from which
- " " " an Elm 12 N 30 E 90 lks
- " " 3 center of sec prime stone NW 1/4
- " " " Jack Oak 12 N 60 W —
- " " " Walnut 10 N 65 E 82 lks
- " " 4 Center of South half prime stone SW 1/4
- " " " No trees near "
- " " 5 middle of South line prime stone
- " " " Sassafras 2 N 60 1/2 E 77 lks
- " " 6 center of E 1/2 Stake on prime stone ^{Prime Pine} South 50 feet
- " " 7 center S. E. q. prime stone ^{Stone} North 50 ft.
- " " " Jack Oak 14 S 25 W 8
- " " 8 middle of South line S. E. q.
- " " " Jack Oak 15 S 60 1/2 W
- " " 9 middle of South line S. W. q. prime stone
- " " " Old tree found