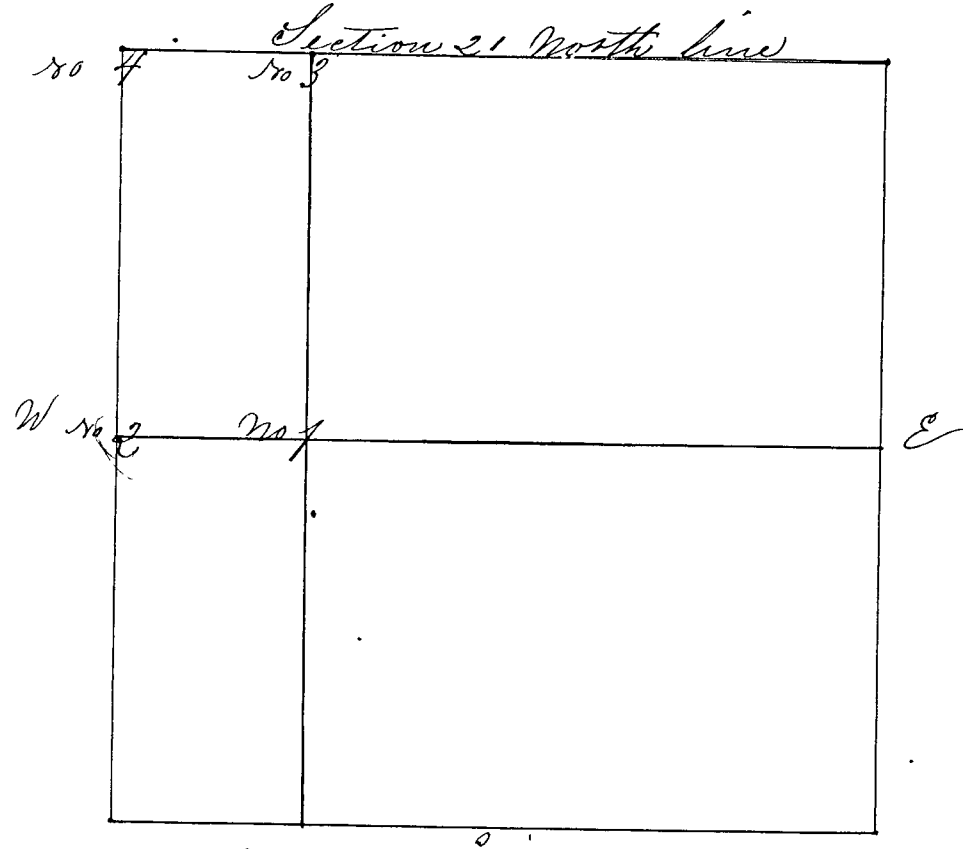


SECTION Twenty one (21), TOWNSHIP Eleven (11)

Surveyed by Wm Herrow Deputy Co. Surveyor to John G Peyton 68.  
Bearing of witness trees taken at 5 deg variation W. for corners No 1 & 2  
Jan. 1st 1840



- Corner No 1 a Stone center E & W. line  $\frac{1}{4}$  m corner
- " " " (Witness Trees) Jack Oaks 5 N  $7\frac{1}{2}$  E 48 Links
- " " " Hickory  $2\frac{1}{2}$  S 44 N 48 Links
- Corner No 2 a Stone marked  $\frac{1}{2}$  mile corner, (Original trees some)
- " " " White oaks 5 S 69 E 318 Links
- " " " Hickory  $1\frac{1}{2}$  S  $7\frac{1}{2}$  W 42 Links
- Personal notice given. Surveyed in May 1850 corners No 3 & 4  
by Wm Herrow. C. S. C. C. v. s. w
- Corner No. 3 a Stone North line  $\frac{1}{8}$  m corner
- " " " Hickory 4 S  $3\frac{1}{2}$  E 46 Links
- " " " Hickory  $1\frac{1}{2}$  N  $19\frac{1}{2}$  W 64 Links
- Corner No 4 a Stone lettered North West Sec. corner
- center-well N 53 E 94 Links
- Jack Oak 6 S 38 W 82 Links