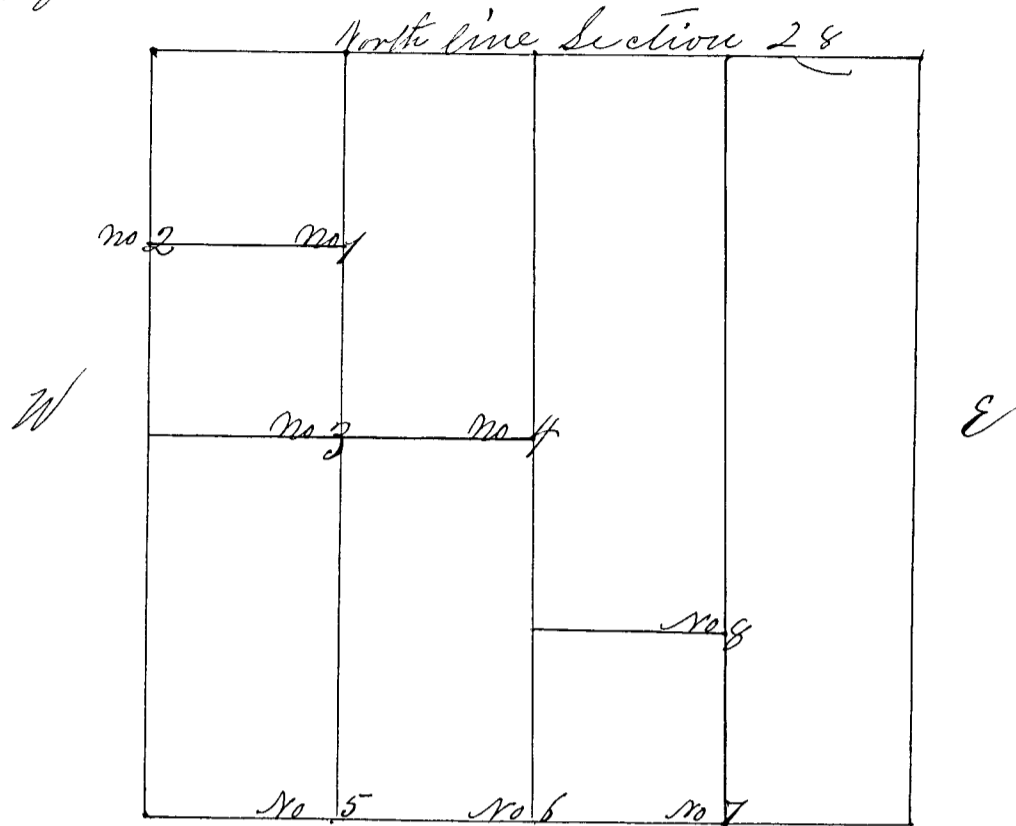


SECTION Twenty eight (28), TOWNSHIP Eleven (11)

Surveyed by Wm Herrow Deputy Co. Surveyor, to John Peyton Co. Surveyor. Bearing of witness trees taken at 5 sec. West Variation sec. 29<sup>th</sup> 1839 for corners nos 1 to 8



- Corner No 1 "White Oak Post" <sup>S</sup>North East quarter (Error should be west P.S.S.)  
 " " " (Witness Trees) Jack Oak 4 N 50° E 7 Links  
 " " " White Oak 18 S 39 W 6 1/2 links  
 Corner No 2 "White Oak Post" West line N 1/4 mile  
 " " " White Oak 21 S 9 E 34 links  
 " " " Hickory 6 N 13 1/2 E 44 links  
 Corner No 3 "White Oak Post" center E 1/2 mile N 1/4 mi.  
 " " " Hickory 15 N 20 1/4 E 29 links  
 " " " Hickory 18 S 13 E 3 links  
 Corner No 4 "White Oak Post" center of Section  
 " " " White Oak 20 N 54 W 21 links  
 " " " White Oak 15 S 70 W 43 links  
 Corner No 5 "White Oak Post" South line N 1/4 mile  
 " " " White Oak 32 N 1/4 W 35 links  
 " " " Gum 12 S 59 E 77 links  
 Corner No 6 "White Oak Post" South line 1/2 mile  
 " " " Original Wit Trees, White oak 10 N 39 E 31 links  
 " " " White Oak 24 S 15 W 25 links  
 Corner No 7 "White oak Post" South line E 1/4 mile  
 " " " Hickory 12 N 59 W 46 links  
 " " " Hickory 10 S 53 1/2 W 53 links  
 Corner No 8 "White oak Post" center South East quarter  
 " " " Hickory 5 S 58 E 20 links  
 " " " White Oak 24 N 57 W 70 links