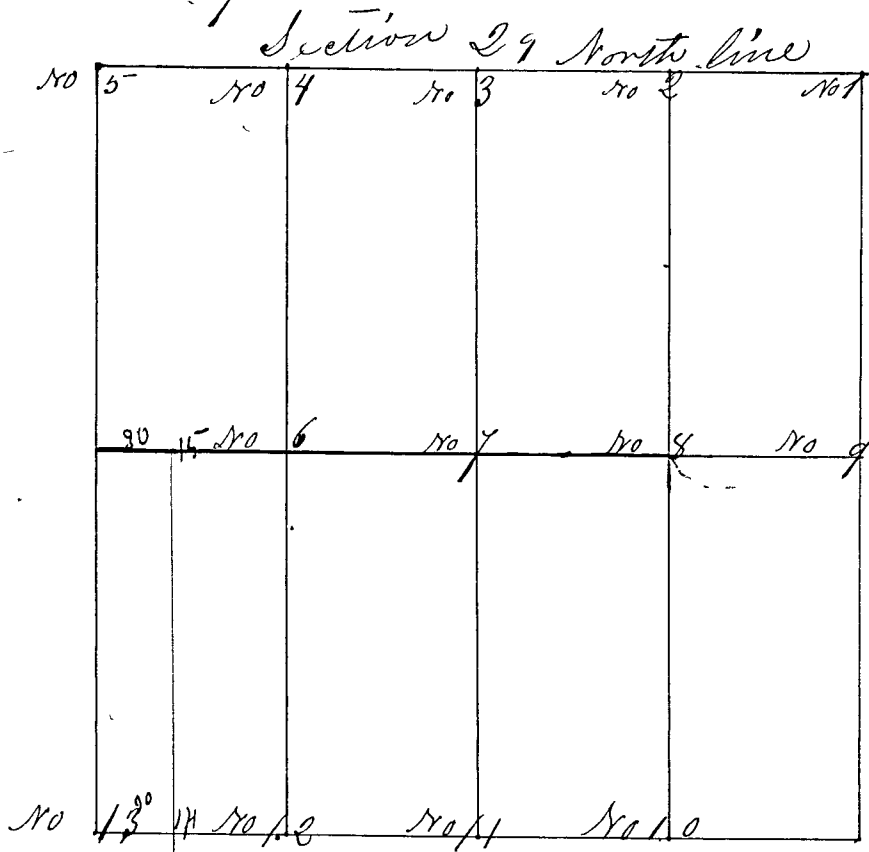


Surveyed by Tom Herrow Deputy Co. Surveyor to John F. Payton Co. Surveyor, Bearing of witness trees taken at 5 deg variation West. Dec. 28<sup>th</sup> 1839



- Corner No 1 a "White Oak Post;" (Post letters etc), N.E. C. S. Longwood trees down, Hickory 15 in dia S 13 E 72 links
- " " " " Hickory 18 S 46 1/2 W 88 links
- Corner No 2 "White Oak Post;" N line E 1/4 mile
- " " " " Hickory 8 S 1 E 14 chains <sup>and</sup> 35 links
- " " " " Jack Oak 6 S 77 W 276 links
- Corner No 3 "White Oak Post;" N 1/2 mile (C.T. down)
- " " " " Hickory 12 S 1/2 E 127 links
- " " " " White Oak Stump 36 N 79 E 106 links
- Corner No 4 "White Oak Post;" N. line N 1/4 mile
- " " " " Jack Oak 7 N 13 W 67 links
- " " " " White Oak 20 S 3 E. 166 1/2 links
- Corner No 5 "White Oak Post;" N. W. S. corner
- " " " " White Oak 18 N 15 E 183 links
- " " " " Hickory 12 S 22 E 70 links
- Corner No 6 a "White Oak Post;" cent. E & W line W 1/4 m.
- " " " " White Oak 15 N 35 W 42 links
- " " " " White Oak 28 S 76 E 31 links
- Corner No 7 a "White Oak Post;" center of section
- " " " " Post Oak 20 N 33 E 62 links
- " " " " White Oak 12 N 78 1/2 E 49 links
- Corner No 8 a "White Oak Post;" C. E & W. S. E 1/4 m.
- " " " " White Oak 28 S 1/2 W 56 links
- " " " " White Oak 22 N 5 1/2 W 18 links
- Corner No 9 a "White Oak Post;" East 1/2 mile
- " " " " Original N.E. } White Oak 14 N 70 E 17 links