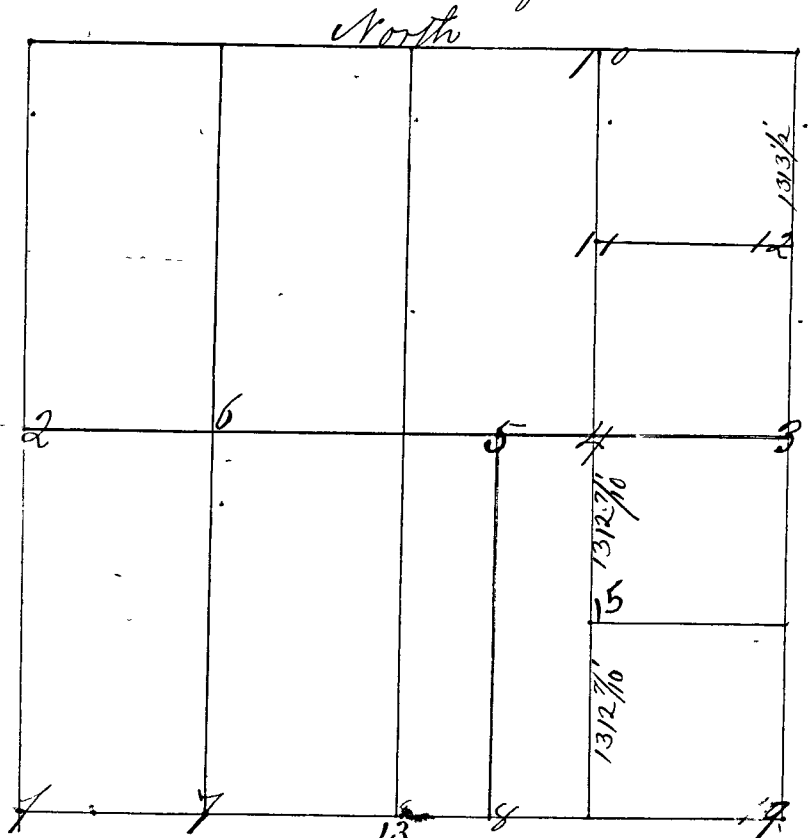


SECTION *Thirty-one* 31 , TOWNSHIP *Eleven* 11

Surveyed by P. J. Luther Surveyor of Clay County Ind. April 23, 24 & 25 - A. D. 1867. Notice given by John S. Richards and all parties were notified, corners set from ~~one to~~ twelve (12). Bearings taken at 3rd 15th Var.



- Corner 1 S W cor. a Sand found O. B.
- " " Witnesses { A W. Oak 12 S 71 E 43 lks,
a Hickory 30 N 57 E 58 1/2 "
- Corner 2 1/2 mile cor Sand Stone
- " " Witnesses. a Black Oak 14 N 86 W 33 1/2 "
- " " a do. 12 S 6 1/2 E 35 1/2 "
- Corner 3 E 1/2 mile cor. a Blue Line Stone on 31
- " " Witnesses. " In Prairie no trees near "
- Corner 4 Sand Stone on 1/4
- " " Witnesses a Jack Oak 4 in S 46 E 45 "
- " " a do. 5 in. S 24 W 131 "
- Corner 5 Sand Stone on 31. 11. 7. 40 Rods & 7/8 lks N of No 4.
- " " Witnesses. Jack Oak 5 S 27 1/2 E 68 1/2 links
- " " In Prairie no other trees near.
- Corner 6 a Sand Stone on 1/4 31
- " " Witnesses a Jack Oak 6 S 65 E 37 1/2 "
- " " a do. 3 N 36 1/2 W 51 "
- Corner 7 a Sand Stone 20 in on 1/4 31
- " " In Prairie
- " " No timber near.
- Corner 8 a Sand Stone marked 31. 120 Rods & 18 3/4 lks N S.E. corner
- " " In Prairie
- " " And no timber near.
- Corner 9 S.E. corner on 31 & 32 Sand Stone
- " " Witnesses a Jack 3 in N 73 1/2 W 167 lks.
- " " In Prairie no other trees near.