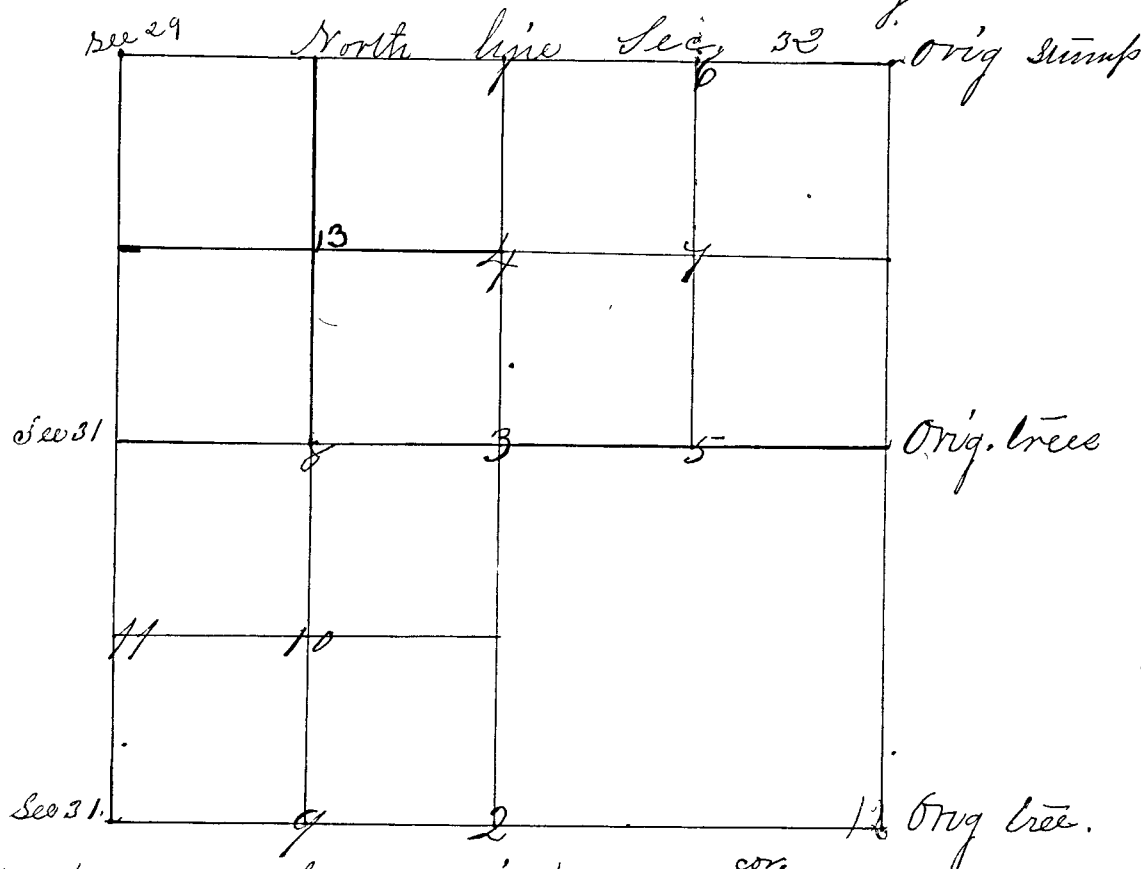


Surveyed by P. J. Luther surveyor of Clay County Indiana November 20th & 21st A. D. 1867. and corners established from one to eleven by mutual consent. East and West lines run at 3^d var. & north & south lines run at 5^d var. Bearings taken at 4^d variation



- Cor. 1 N 1/2 m. cor. set by equi dist from N. W. ^{cor} to the 1/4 m cor east set by Herrow
 " " a Sand Stone 10 in marked 1/4
 " " a Wild Cherry 16 N 6 5/2 W 45 lbs,
 " " a White Oak 10 S 5 9/2 E 14 3 "
- Cor 2 S 1/2 mile Equi divide a S. S. 12 in m. 1/4
 " " In Prairie. no trees near
- Cor 3 center of Sec. a Sand Stone 13 in m 1/4
 " " a Black Oak 10 S 12 W 6 6 1/2 "
 " " a Hickory 5 N 7 5 W 3 8 "
- Cor 4 1/4 mile N of center a S S 18 in m 1/8
 " " a Hickory 5 N 3 7/2 W 2 1/2 "
 " " a Do. 10 S 5 3 E 2 4 "
- Cor 5 1/4 mile E of center a S. S. 20 in m 1/8
 " " a Hickory 15 N 30 1/4 E 6 6 "
 " " a Jack Oak N 6 5 1/2 W 17 2 "
- Cor 6 1/4 mile W of N. E. cor a S. S. 20 m 1/8 (set from Herrow's witness)
 " " a Jack Oak 8 S 3 9 W 4 6 1/2 "
 " " a Do. 6 N 6 8 1/2 E 6 7 1/2 "
- Cor 7 center of N. E. quarter a S. S. 16 m 1/8
 " " a Jack Oak 10 N 6 2 1/2 W 8 4 "
 " " a Hickory 5 S 6 1 1/2 W 6 7 1/2 "
- Cor 8 1/4 West of center a "Niggerhead" 16 m 1/8
 " " a Jack Oak 5 S 3 5 W 5 6 "
 " " No other trees taken