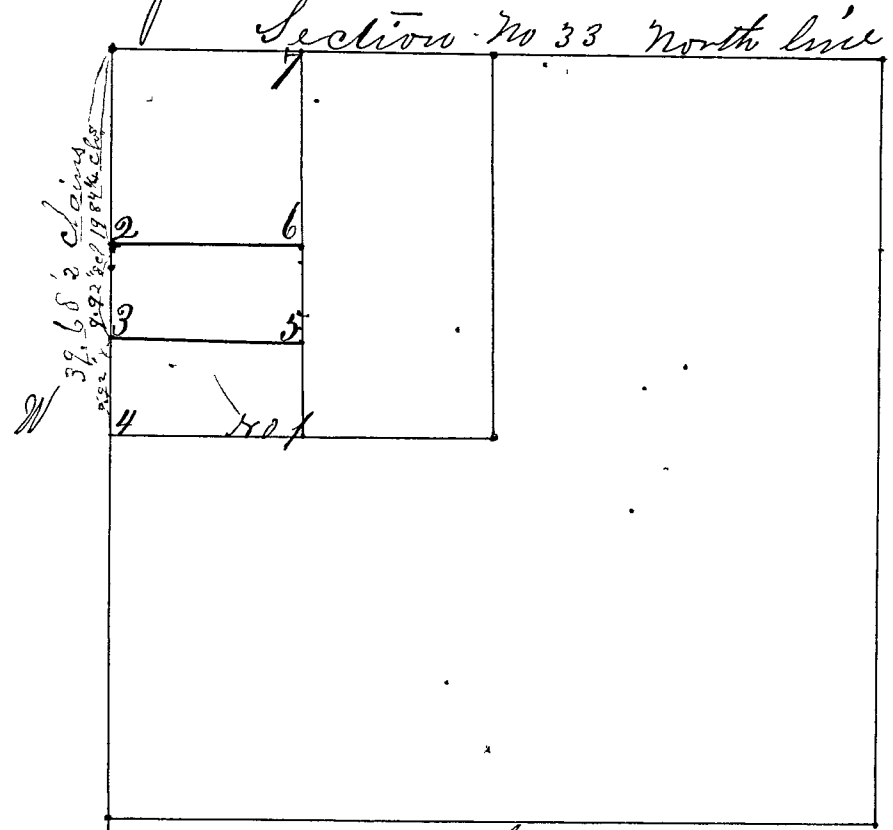


SECTION *Thirtythree* 133, TOWNSHIP *Eleven* 111

Surveyed by Wm. Herrow Deputy Co. Surveyor to John P. Payton. Co. Surveyor. Bearing of witness trees taken at 5 deg. variation West. corner no 1 Jan. 8th 1840



corner 7 set from Herrow's witnesses in section 28 - 1 town

Corner No 1 a Stone center E & W line $\frac{1}{4}$ mile
Witness Tree, Red Oak 10 N 18 E. 26 Links
Ground 14848 E 52 links

Corner No 2 a Sand Stone marked $\frac{1}{4}$ S
Witnessed by a White Oak 24 in. S 22 $\frac{1}{2}$ W. 84 - Links.

Corner No 3 a "Niggerhead" marked 10 ch. S. 2.
Witnessed by a Jack oak. 6 in. N 80. E. 43 $\frac{1}{2}$ Links.
" " " " " 6 S 44 E. 16 $\frac{1}{2}$ Links.

Corner No 4. Sand Stone marked $\frac{1}{2}$ M.W.S.
Witnessed by a Jack oak 11 in N. 38 $\frac{1}{2}$ E. 52 Links
" " " Hickory 4 in. S 58 $\frac{1}{2}$ E 59 $\frac{1}{2}$ "

Corner No 7 a "Niggerhead" marked $\frac{1}{4}$ M.E.N. S '83 (very large stone)
Witnessed by a Sand Stone marked T.B.R.
South 45 West 47 $\frac{1}{2}$ Links, also by a
Sand Stone marked I.M. N. 45 E 41 $\frac{1}{2}$ Links

Corner No 6 Sand Stone marked 20 ch. S. N. 7
Witnessed by a Wild Cherry 10 in N. 18 W. 71 Links

Corner 5 Sand Stone marked S.S.
Witnessed by a Hickory 18 in. S. 37 W. 66 $\frac{1}{2}$ Links.
" " " White Oak 3 in N. 89 $\frac{1}{2}$ W. "

Corners from 2 to 7 set by Thomas B. Robertson Co. Surveyor
March 29th & 30th 1883 by request of W. D. Jacobs and consent of parties interested, Sargeant Staggs and W. H. Woods chairmen
and W. D. Jacobs, Magman, - all sworn as the law requires.
Recorded by Thomas B. Robertson Surveyor Clay Co.