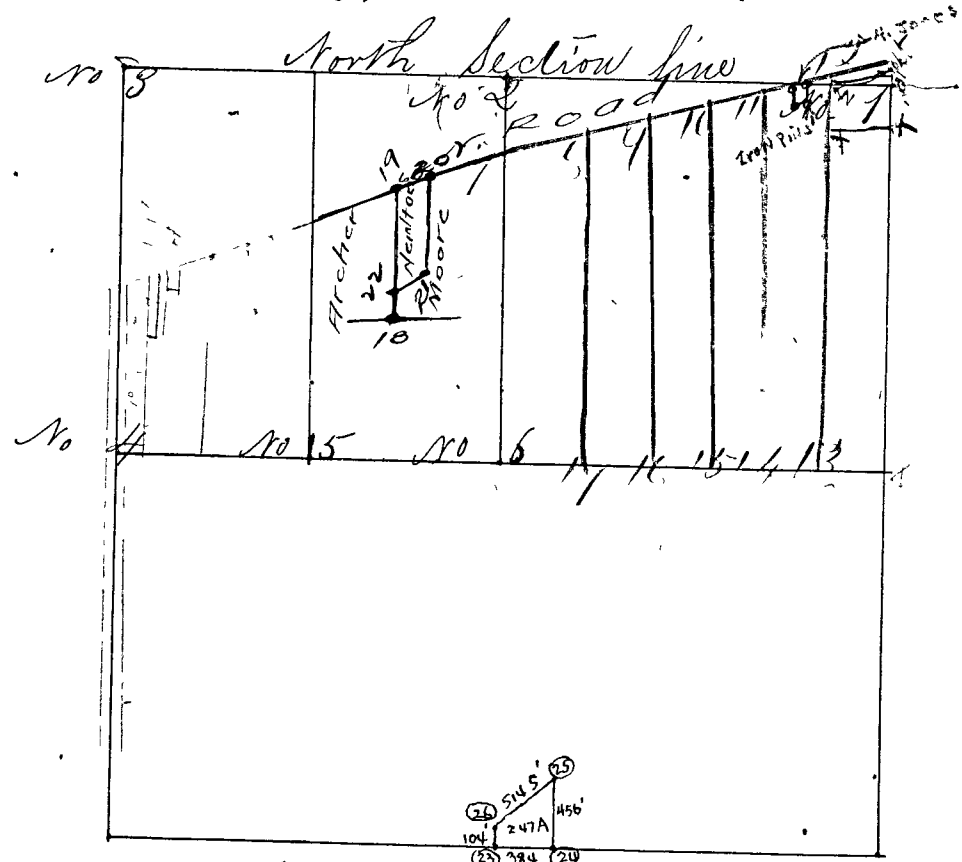


Surveyed by Am. Herron, Deput. Co. Surveyor, Oct. 27<sup>th</sup> 1857. Parties Represented as present S. W. Craft, & J. L. Whippo. chain carriers & J. L. Whippo marker sworn according to Law. Variation of cutting trees same as lines.



- Corner No 1 a Stone (lettered) N. E. S. C.  
" " " Nit Trees, Elm 24 East with Town line 112 links  
" " " St. Cherry 8 N 22. E 12 6/10 L.
- Corner No 2 a Stone North 1/2 mile corner,  
" " " Sugar 16 West with line 10 1/8 links  
" " " White Oak 36 S 7 1/4 E 138 L.
- Corner No 3 a Stone (lettered) N. W. S corner.  
" " " Sugar 10 S 8 1/2 E 123 L.  
" " " White Walnut 10 S 74 W 185 L.
- Corner No 4 a Stone West 1/2 m corner  
" " " White Oak 10 S 16 E 70 1/2 L.  
" " " Sugar 12 S 8 5/8 E 119 L.
- Corner No 5 a Stone center E & N line 1/4 mile to  
" " " Hickory 10 S 28 N 15 1/4 L.  
" " " White Oak 24 S 8 1/2 N 41 L.
- Corner No 6 a Stone; center of section  
" " " Beech 14 S 26 3/4 N 19 1/3 L.  
" " " White Oak 12 N 48 W 65 L.

Surveys by G. Walker... notice being... in a way... small... between...

- Corner 7 a Sand Stone in N bearing,
- " " " " Stone in South 30 links
- " " " " " " " " " "
- " " " " " " " " " "