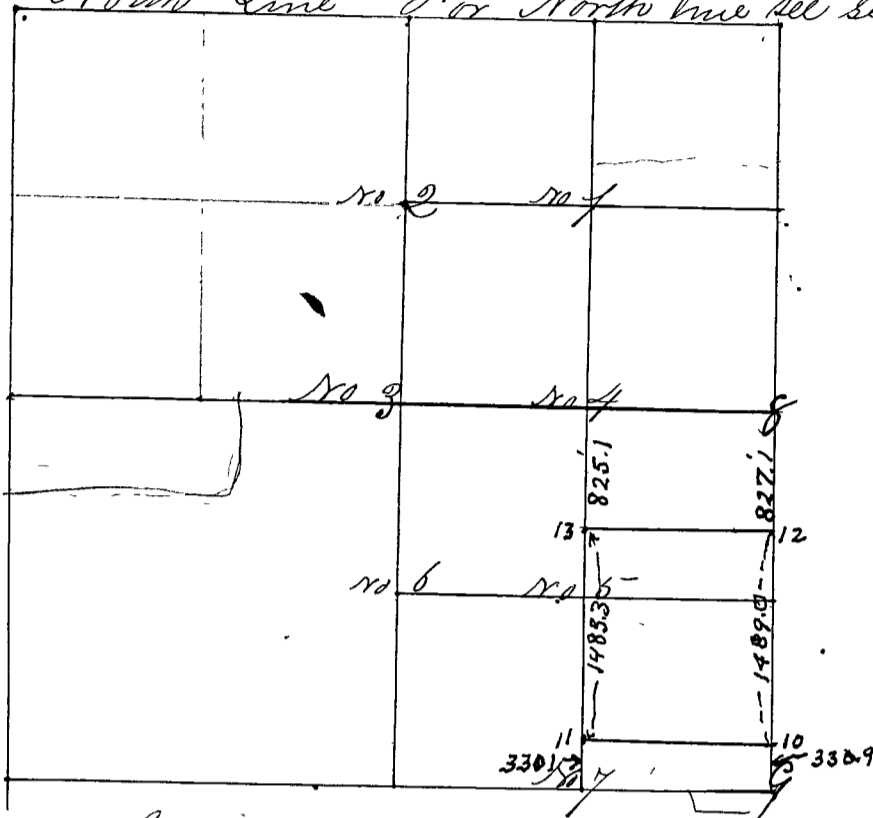


Surveyed by Hon. Heron Deputy Co. Sur. January 6<sup>th</sup> 1858  
 Parties notified and present Edmund Woods and Amos Woods  
 chain carriers. Henry M. Brown marked, all sworn & corners  
 from no 1 to no 7 inclusive set at a variation of about 5 deg  
 West  
 North Line For North line see sec. 1



- Corner No 1 a Stone: center N.E. quarter,  
 " " " Black Oak 10 S 7 1/2 W 44 links  
 " " " Hickory 6 N 33 E 13 2/3 "
- Corner No 2 a Stone: N & S center line north 1/4 mile corner  
 " " " Red Oak 6 N 50 1/2 W 9 links  
 " " " Maple 8 N 19 E 23 L.
- Corner No 3 a Stone: center of sec. 12  
 " " " Elm 14 N 73 W 11 1/3 "  
 " " " Poplar 20 S 34 E 32 "
- Corner No 4. a Stone: E. E. & W. line E 1/4 m.  
 " " " Red Oak 4 S 26 W 45 "  
 " " " Spruce Gum 10 N 55 W 55 "
- Corner No 5 a Stone: center S. E. q.  
 " " " Dog wood 3 N 77 W 9 "  
 " " " Birch 24 South 53 "
- Corner No 6 a Stone: E. N & S. line E 1/4 m.  
 " " " Gum 15 S 24 W 17 1/3 "  
 " " " Elm. 7 S 77 1/4 E. 22 2/3 "
- Corner No. 7. a Stone: South S line E 1/4 m.  
 " " " Ash 20 N. 47 1/4 W 56 1/4 L.  
 " " " White Walnut 5. N 60 2/4 E 17 2/3 L.

Further surveyed by M. Brist October the 19 1870 by request of  
 Samuel Starn as corners 8 & 9 established