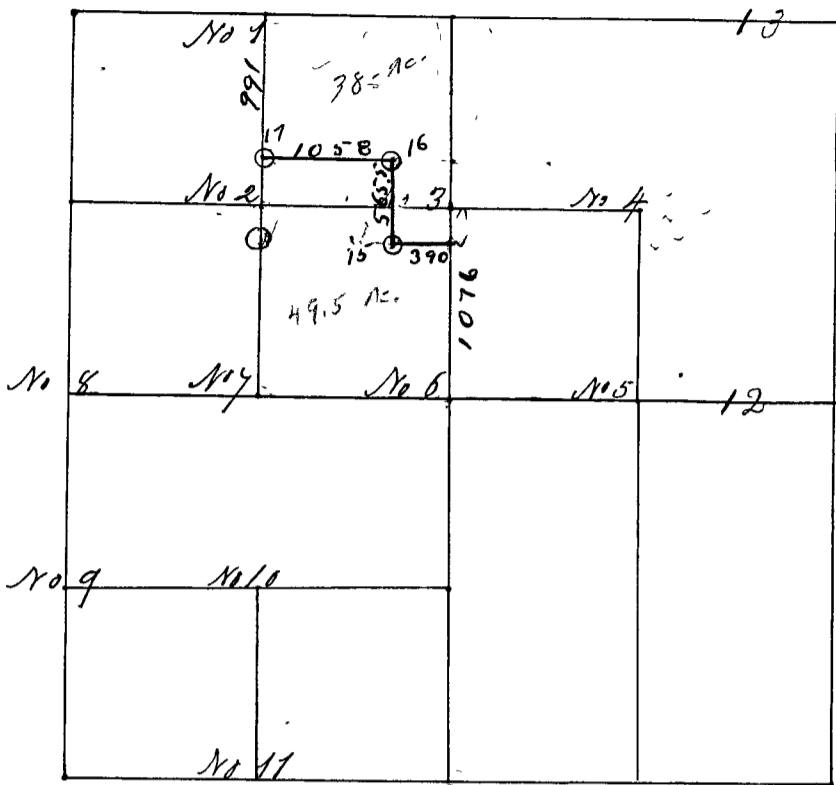


March the 15th 1854 corners perpetuated by Wm. Herrow Dep-
uty County Surveyor. Variation from 4 1/2 to 6 1/2



- Corner No 1 North Section line 1/4 mile corner. Stone
" " " B. Oak 5 N 3 E 7 1/2 L.
" " " Hickory 5 S 8 1/2 W 110 L.
- Corner No 2 Center N.W. gr. Stone
" " " B. Oak 2 S 11 E 32 L.
" " " W Oak 11 S 8 1 E 10 "
- Corner No 3 Stone 1/4 mile N of center
" " " Hickory 12 S 7 1/2 W 372 L.
" " " Post Oak. 5 S 8 1/2 E 249 "
- Corner No 4 Center N. E gr. Stone.
" " " Hickory 5 S 5 8 E 21 L.
" " " Do. 4 S 5 4 W 16 1/2 L.
- Corner No 5 Stone one gr. E of center
" " " W. Oak 18 S 7 5 E 9 L.
" " " Do 4 N 16 1/2 W 19 L.
- Corner No 6 Center of section. Stone
" " " S. Oak 1 1/2 S. 1 E 7 1/2 L.
" " " Hickory 11 N 8 2 1/2 E 196 L.
- Corner No 7 Stone one gr. W. of center
" " " W. Oak 5 S 7 9 1/4 E 36 L.
" " " Do. 4 N 2 5 1/2 E 4 1/2 L.
- Corner No 8 half mile stake N side a Stone
" " " B. Oak 4 N 6 7 1/4 E 55 L.
" " " Do. 8 S 8 9 1/2 W 71 "
- Corner No 9 one gr S of No 8. Stone.
" " " Black Oak 10 S 7 7 1/2 W 95 1/2 L.
" " " W - Oak 1 1/2 S 2 1/2 W 46 L.