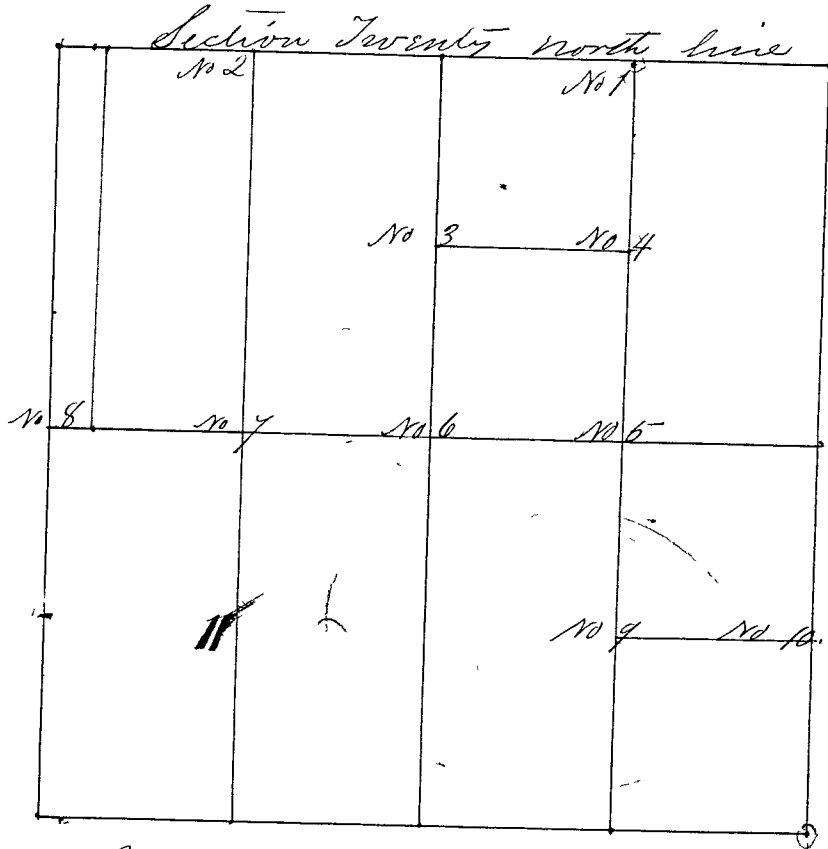


March 15th 1855 - Surveyed by Hon. Huron County Survt. notice and common consent of Parties, chain-carriers & Markers sworn as Law directs. N. Modkitt, M. Anderson, W. Carter, M. P. Carter, Variation of Witness trees West same as lines &c. and corners set from 1 to 8 Mar, 15th 16, & 17th 1855 -



- Corner No 1 a Stone north sec. line E 1/4 W. 6.
" " " , Witness Trees, Hickory 12 N 32 W 24 1/2 links
Elm 9 S 2 E 65 links
- Corner No 2 a Stone north Sec line W 1/4 sec. c.
" " " , Wit Trees, White Oak 22 S 37 E 70 lin
Jack Oak 4 S 4 1/2 W 70 lin
- Corner No 3 a Stone center north and south line. North on fourth corner on side line
" " " , Wit Trees, Jack Oak 5 S 65 7/8 E 67 links
Jack Oak 24 S 31 W 98 links
- Corner No 4 a Stone center of N E, qd section
" " " , Witness Trees, Jack Oak 12 S 40 E 2 7/2 L.
White Oak 18 N 84 W 122 L.
- Corner No 5 a Stone, E & W center line E 1/4 m. c.
" " " , Witness Trees, White Oak 12 S 2 1/2 W 49 1/2 L.
16 S 49 E 93 links
- Corner No 6 a Stone center of sec. 20 1/2 R. 1.
" " " , Witness Trees, White Oak 24 N 46 E 27 L
White Oak 8 S 68 1/2 W 53 L.
- Corner No 7 a Stone center E & W line W 1/4 m. c.
" " " , Wit Trees, White Oak 30 S 55 W 17 1/2 L.
Jack Oak - S 26 1/2 E 31 1/2 L.
- Corner No 8 a Stone marked 1/2 West Sec. line 1/2 mile c.
" " " , Wit Trees, Jack Oak 3 S 73 1/2 E 17 L.
" " " , Jack Oak 3 S 7 E 20 L.