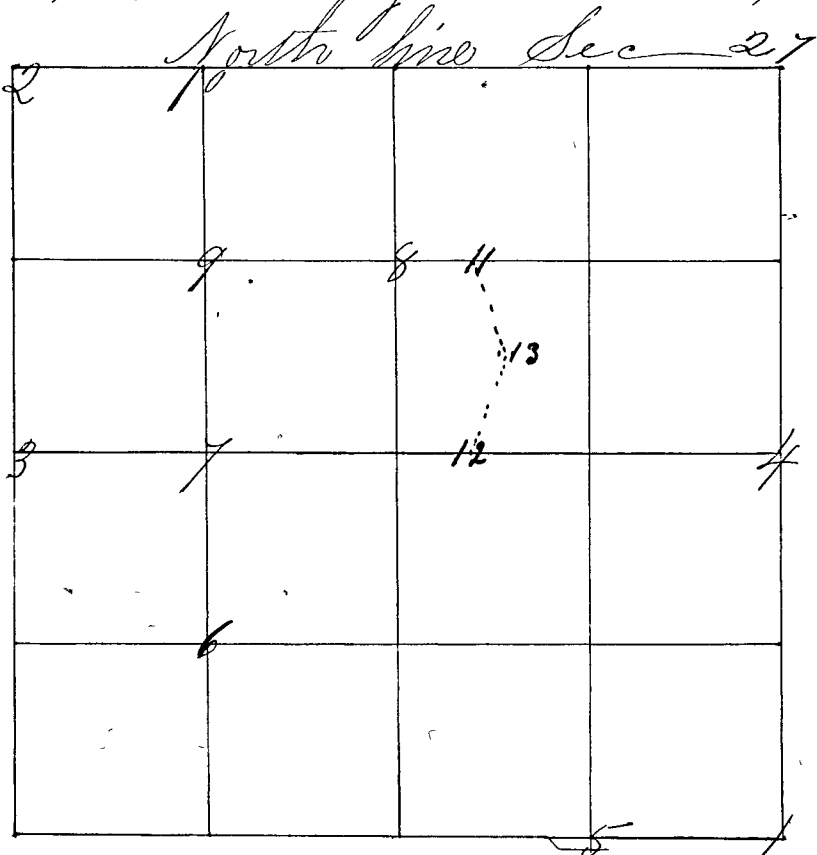


SECTION Twentyseven 27, TOWNSHIP Inver 12

Surveyed by Peter J. Luther Surveyor of Clay County Ind  
 March 17, 1849 to 19th 1868 by all parties interested being present and  
 agreeing to survey, lines perpetuated and corners established  
 from one to ten W. J. Cole and Wash. Haney chain carriers  
 sworn as the Law directs N & S lines run at  $4^{\circ} - 45'$  var. E & W.  
 lines run at  $3^{\circ} - 45'$ . Bearings taken at  $4^{\circ}$



- Corner A 1 S. E. corner a Flint Stone 20 m S. 26, 27, 34, 35 (Bearings found)
- " " " a Water Oak 888 E 10 Links
- " " " a Jack Oak 6466 W 35 "
- Cor. 2 N. W. corner a Flint Stone 24 m S 21, 22, 27, 28 - 12 - 7 (B. found)
- " " " and Original tree (W. Oak
- " " " a Red Oak 14 S 20 E 56 "
- Cor. 3 W 1/2 a, S. S. 14 m 1/4 S. 27-28 (Orig. " Swamp found)
- " " " a White Oak 9 S 27 E 51 "
- " " " a Stone North 25 "
- Cor 4 E 1/2 a " rigger head" Stone 24 m 1/4 26-27 (Roots of old witnesses dug out)
- " " " (Set stones in old - a Stone N 23 E 27 "
- " " " orig. places, a S 31 E 36 "
- Cor 5 1/4 N of 1 a Stone 16 m 1/8 —
- " " " a Stone North 25 "
- Cor 6 cen of S. W. qr. a Stone 22 m 1/8
- " " " a B. Oak 6 N 67 E 45 lks.
- " " " a S. 10 S 47 E 25 "
- Cor 7 1/4 E of 3 a S. S. 23 m 1/8
- " " " a Hickory 18 x 77 W 83 lks.
- " " " No other trees near.
- Cor 8 1/4 N of center a, S. S. 24 m 1/8 from which
- " " " a Stone East 25 "