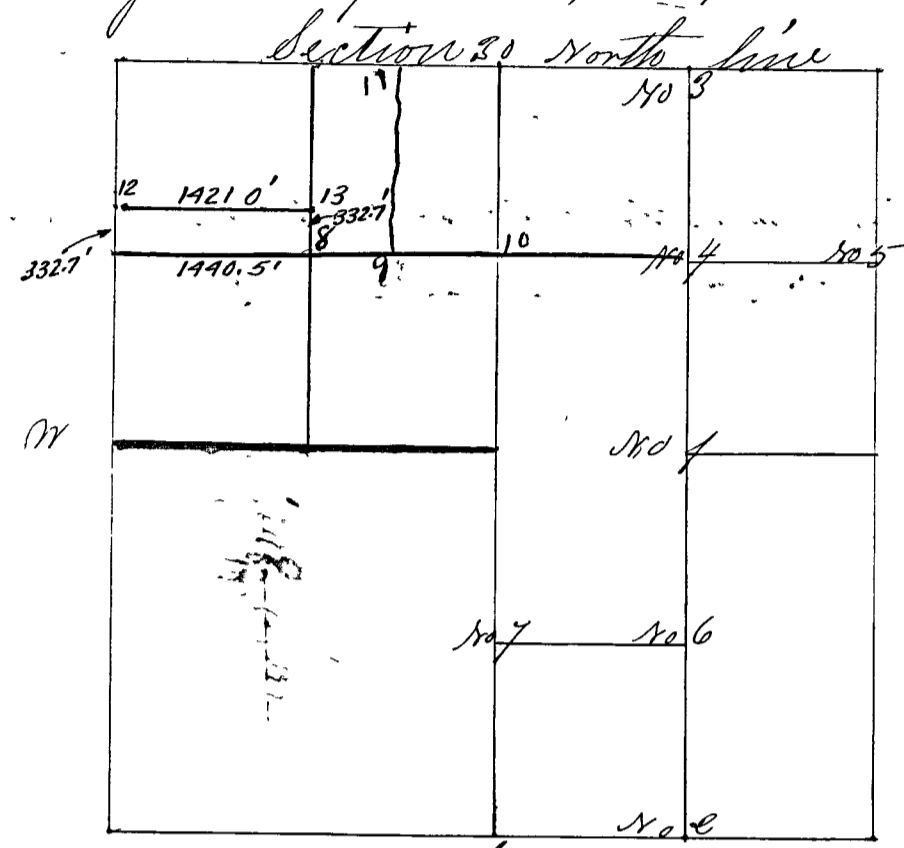


Surveyed by Wm Herrow Deputy Co. Surveyor to John J. Peyton  
 C.S. The bearing of witness trees taken at 5 deg west variation and  
 notice given in a paper printed in Terre Haute according to  
 the then existing Law April 13<sup>th</sup> 1840 corners nos. 1 & 2



- Corner No 1 a Stone; center East & West line E 1/4 NW
- " " " (Witness Trees) White Oak 18 N 63 1/2 E 33 links
- " " " Hickory 12 S 20 E 10 links
- Corner No 2 a Stone South line East 1/4 NW
- " " " Hickory 16 N 43 E 60 links
- " " " Hickory 5 N 65 W 41 links
- March 1<sup>st</sup> 1855 corners nos. 3, 4 & 5 this day perpetuated  
 verbal notice and mutual consent - chain carriers & markers  
 sworn. S. Harris, S. Carter, W. Light & Wm Light corners nos 6 & 7  
 left to consent rec'd. by summons May 14<sup>th</sup> cor 6 & 7 set.
- Corner No 3 a Stone E 1/4 NW corner south section line
- " " " (Witness Trees) Black Oak 12 N 43 1/4 W 97 links
- " " " Hickory 30 S 42 W 64 L.
- Corner No 4 a Stone center of North East-quarter section
- " " " (Witness Trees) White Oak 18 N 69 W 85 1/2 links
- " " " Sassafras 4 S 82 3/4 E 58 1/2 L.
- Corner No 5 a Stone E Section line N 1/4 NW corner
- " " " Witness Trees White Oak 12 S 5 1/2 W 27 1/2 links
- " " " White Oak 24 N 28 1/2 E 64 1/4 L.
- Corner No 6 a Stone center of S. E. quarter S.
- " " " (Witness Trees) Hickory 11 N 84 W 29 1/4 L.
- " " " Hickory 12 S 75 E 39 L
- Corner No 7 a Stone center N & S line S 1/4 NW
- " " " (Witness Trees) Hickory 14 N 22 1/2 E 12 1/2 L.
- " " " Black Oak 10 S 67 W 22 L.