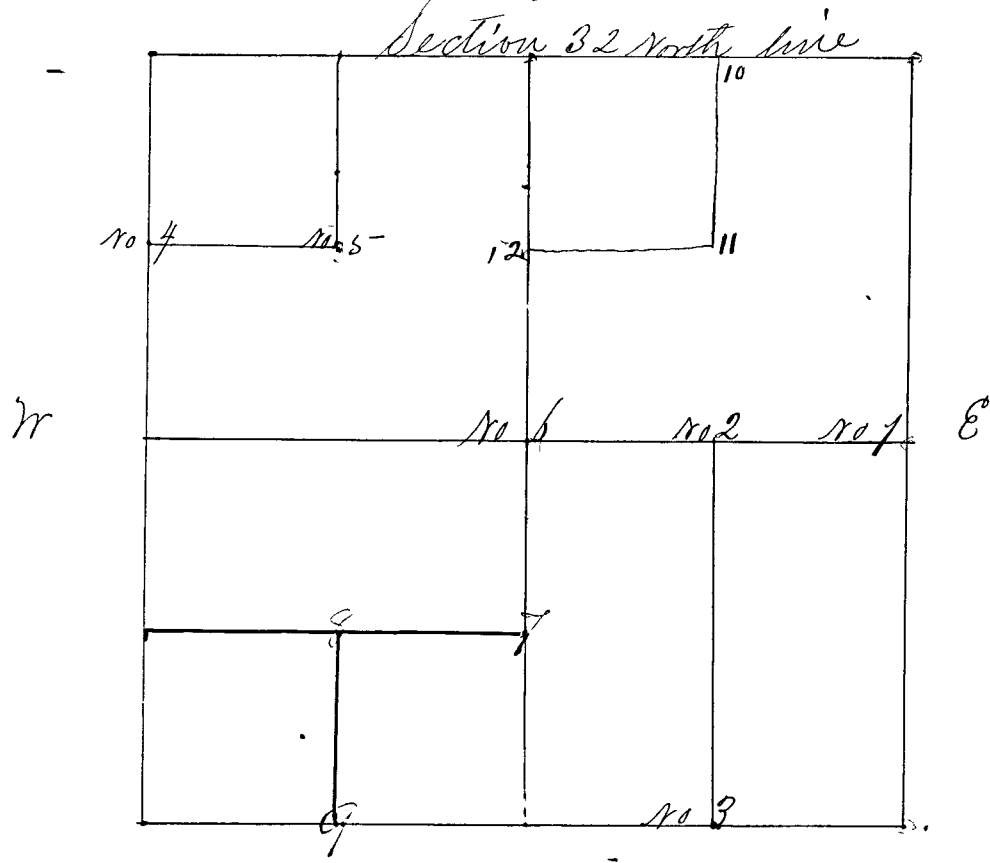


SECTION *Thirty two 132*, TOWNSHIP *Truro 12*

Survey, commenced January 21<sup>st</sup> 1855 agreeable to notice published in the *Verre Haute Journal* 3 weeks in succession Com. Law 4<sup>th</sup> 1850 Vol 2<sup>nd</sup> no 14<sup>th</sup> dated Dec. 26<sup>th</sup> 1849 & Surv. by Hon Yerrero, C. S. C. C.



**Notice of Survey.**  
 Notice is hereby given to all non-resident land owners of section number thirty-two (32), town of Truro, north, range seven (7) west, that the undersigned will have his land, situated in the above named section, town and range, surveyed by the County Surveyor or his duly and legally appointed Deputy. Said survey to begin on Monday, April 23<sup>rd</sup> A. D. 1855, at 10 o'clock a. m.  
 All interested parties are requested to be present.  
 JACOB STICKLES.

Corner No 1 a Stone East 1/2 mile. 'Original Cross'  
 " " " Hickory 9d 89 W 2 1/2 links  
 " " " Hickory 12 N 23 E 180 links  
 Corner No 2 a Stone center E & W line E 1/4 mile  
 " " " Jack Oak 10 S 25 E 13 links  
 " " " Jack Oak 4 N 46 W 3 links  
 Corner No 3 a Stone South line East 1/4 mile.  
 " " " White Oak 20 S 20 W 7 1/4 links  
 " " " White Oak 22 N 88 E 16 links  
 January 20<sup>th</sup> 1855 - perpetuated corner 4 in the above section by consent of all the parties & being present  
 Corner No 4 a Stone, West section line north 1/4 mile corner  
 " " " (Wetup Trees) Elm 10 S 51 E 23 links  
 " " " White Walnut 10 N 62 E 30 1/4 links  
 March 27<sup>th</sup> 1855 corners no 5 & 6 perp. by N. D. Homer.  
 Corner No 5 - a Stone center of North West quarter  
 " " " (Wetup Trees) Sugar 20 N 89 W 4 1/2 L,  
 " " " Sugar 2 1/2 S 3 1/4 E 19 1/2 L.  
 Corner No 6 a Stone center of Section 32  
 (Wetup Trees) Hickory 10 N 46 W 3 1/2 L,  
 White Oak 24 S 10 1/4 E 6 1/2 L,  
 Chain carriers and markers in the above corners 4 to 6 inclusive sworn as required by Law viz; Wesley Light, C. Whayland, M. Philips, D. Wyatt &c Jan. 20 & Mar. 27<sup>th</sup>.