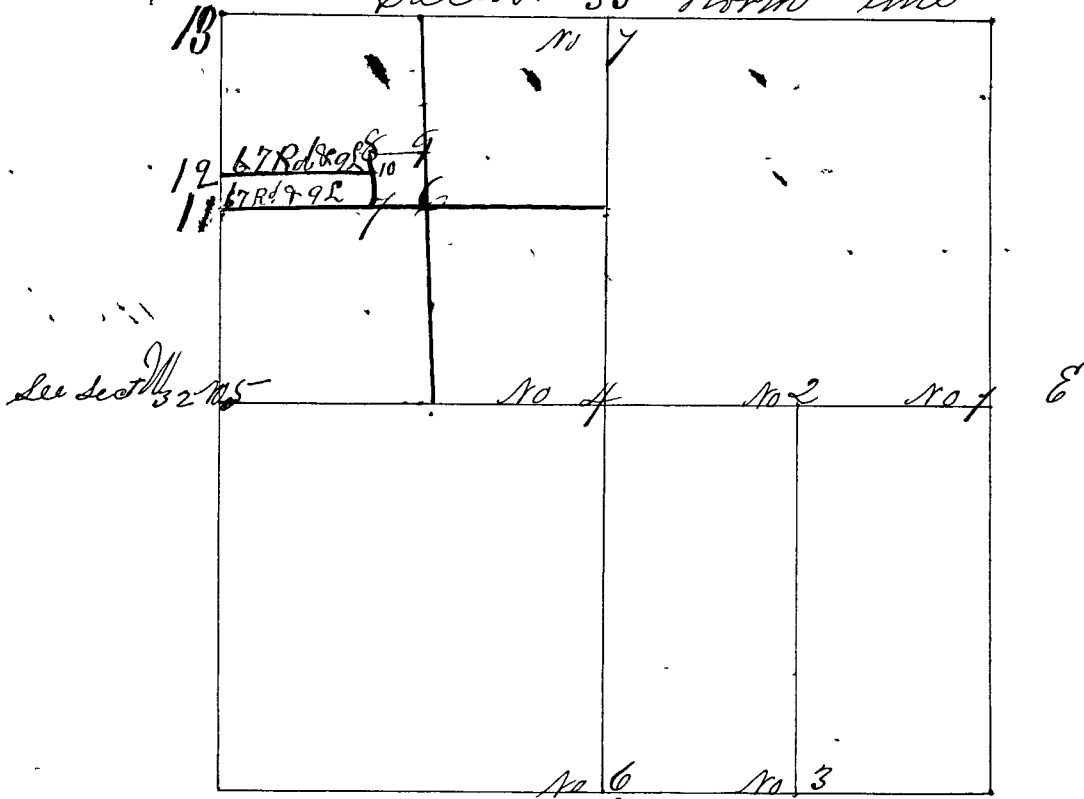


Survey commenced January 21<sup>st</sup> 1850 according to notice published in the "Terre Haute Journal" 3 weeks in succession commencing Jan. 14<sup>th</sup> 1850 Vol. 2<sup>nd</sup> No 14 Dated Dec. 26<sup>th</sup> 1849 and Surveyed by Orono Carroll County Surveyor, C.



- Corner No 1 a Stone East 1/2 mile (Orig. T down)
- " " " Witness Trees, White Oaks in an <sup>E 2.</sup>  $\$40 \& 2$  links
- " " " Hickory 12 S 8 7 N 108 links
- Corner No 2 a Stone center E & N. line E 1/4 m
- " " " Jack Oak 4 S 56 7 99 links
- " " " Jack Oak 4 S 7 1/4 E 261 links
- Corner No 3 a Stone South line E 1/4 mile corner
- " " " White Oak 18 N 12 W 36 1/2 links
- " " " White Oak 21 S 23 E 6 1/2 links
- Corner No 4 a Stone center of Section
- " " " Jack oak - 15 5/2 E 12 1/2 links
- " " " Elm 7 S 10 W 8 links
- Corner No 5 a Stone; West 1/2 mile
- " " " Original Trees See Section 32
- Corner No 6 a Stone South 1/2 m (Orig. T gone)
- " " " Black Oak 5 S 2 W 33 links
- " " " Hickory 6 N 1 E 6 2 1/2 links
- Corner No 7 a Stone North 1/2 mile
- " " " ("Original Trees")