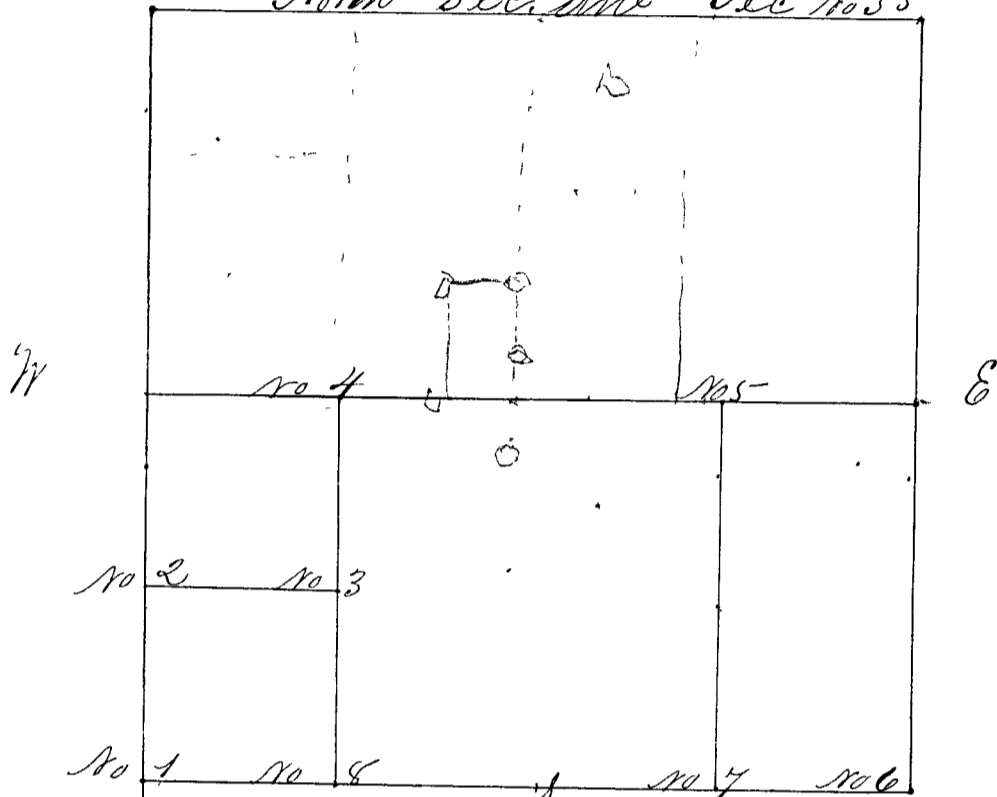


Surveyed by Am Herrow Esq, L. C. Ia. March 15th 1852
 agreeable to notice given in the "Prairie City" a paper printed
 and published in Terre Haute Ia dated Feb. 16th and
 published in Volume no six nos 3, 4 & 5 in a paper a no of 2
 nos being recd by me Am Herrow and lines and corners from
 No 1 to no 8. established agreeable to said notice March
 15th 1852 Variation N. T., 5 deg N.

North Sec. line Sec no 35



- Corner No 1 a Stone let. South West corner S 85- E 12 N 7
 (W. Trees Red Oak 20 in N 1/4 W 6 links
 Wild Cherry 3 N 3 3/4 W 4 3 links
- Corner No 2 a Stone West line South 1/4 mile corner
 (W. Trees) White Oak 36 S 27 N 9 4 links
 White Oak 20 N 3 4/2 W 7 2 links
- Corner No 3 a Stone center of South West quarter. sec.
 (W. T.) Hickory 12 N 1 W 12 links
 Hickory 18 N 80 W 14 links
- Corner No 4 a Stone center E & W line N 1/4 m. c.
 (W. T.) Jack Oak 5 S 43 N 36 links
 Jack Oak 3 S 15 1/4 E 20 1/4 links
- Corner No 5 a Stone center E & W. line E 1/4 m. c.
 (W. T.) White Oak 2 S 3 1/2 N. 45 links
 White Oak 3 S 6 1/4 E 24 1/2 links
- Corner No 6 a Stone; let. South East corner Section
 (W. T.) Cottonwood 1 N 15 W 29 1/2 links
 Stone corner of Sections nos 1 & 2 from
 No 11 N of Range seven west. East with line
 I. Terrell line 15-6.
- Corner No 7 a Stone South Sec. line E 1/4 m. corner
 (W. T.) Jack Oak 3 N 23 E 34 1/2 links
 Jack Oak 3 N 42 W 55 links